

Recombinant NGF/NGFB Monoclonal Antibody

catalog number: AN300217P

Note: *Centrifuge before opening to ensure complete recovery of vial contents.*

Description

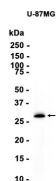
Reactivity	Human;Mouse;Rat
Immunogen	Recombinant Human NGF / NGFB protein
Host	Rabbit
Isotype	IgG
Clone	B135
Purification	Protein A
Buffer	0.2 µm filtered solution in PBS

Applications

Recommended Dilution

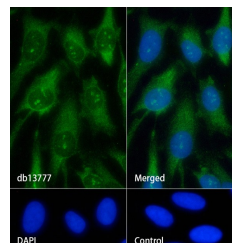
WB: 1:1000; ICC/IF: 1:100-1:200

Data



Western blot analysis of extracts from U-87 MG cells at 1:1000.

Observed-MW:27 kDa
Calculated-MW:27 kDa



Immunofluorescence analysis of HeLa cells labelling NGF. The cells were fixed with cold 100% methanol (10min, 4°C) and blocked in 1% BSA/10% normal goat serum/0.3M glycine in 0.1% PBS-Tween 20 for 1h. The cells were then incubate (1:100) at room temperature for 1h, followed by a further incubation at room temperature for 45min with Goat Anti Rabbit IgG (H+L)-AF488 (shown in green). Nuclear DNA was labeled in blue with DAPI. Control: Secondary antibody only.

Preparation & Storage

Storage	Store at -20°C Valid for 12 months. Avoid freeze / thaw cycles.
Shipping	Ice bag

Background

This gene is a member of the NGF-beta family and encodes a secreted protein which homodimerizes and is incorporated into a larger complex. This protein has nerve growth stimulating activity and the complex is involved in the regulation of growth and the differentiation of sympathetic and certain sensory neurons. Mutations in this gene have been associated with hereditary sensory and autonomic neuropathy, type 5 (HSAN5), and dysregulation of this gene's expression is associated with allergic rhinitis. [provided by RefSeq, Jul 2008]

For Research Use Only

Toll-free: 1-888-852-8623
Web: www.elabscience.com

Tel: 1-832-243-6086
Email: techsupport@elabscience.com

Fax: 1-832-243-6017