

# CXCL1 Polyclonal Antibody

Catalog Number: E-AB-19462



**Note:** Centrifuge before opening to ensure complete recovery of vial contents.

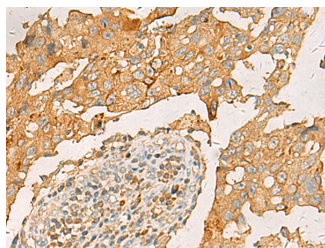
## Description

|                     |   |
|---------------------|---|
| <b>Reactivity</b>   | Human, Mouse, Rat                                       |
| <b>Immunogen</b>    | Synthetic peptide of human CXCL1                        |
| <b>Host</b>         | Rabbit  |
| <b>Isotype</b>      | IgG   |
| <b>Purification</b> | Antigen affinity purification                           |
| <b>Conjugation</b>  | Unconjugated  |
| <b>Formulation</b>  | PBS with 0.05% NaN <sub>3</sub> and 40% Glycerol, pH7.4 |

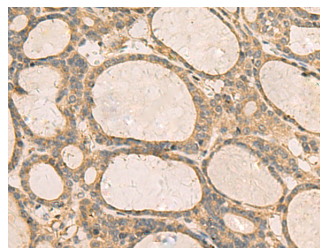
## Applications Recommended Dilution

|              |                |
|--------------|----------------|
| <b>IHC</b>   | 1:50-1:100     |
| <b>ELISA</b> | 1:5000-1:10000 |

## Data



Immunohistochemistry of paraffin-embedded Human breast cancer tissue using CXCL1 Polyclonal Antibody at dilution of 1:35 (x200)



Immunohistochemistry of paraffin-embedded Human thyroid cancer tissue using CXCL1 Polyclonal Antibody at dilution of 1:35 (x200)

## Preparation & Storage

**Storage** Store at -20°C. Avoid freeze / thaw cycles.

## Background

CXCL1 (C-X-C Motif Chemokine Ligand 1) is a Protein Coding gene. Diseases associated with CXCL1 include Melanoma and Bacterial Meningitis. Among its related pathways are Peptide ligand-binding receptors and Chemokine Superfamily Pathway: Human/Mouse Ligand-Receptor Interactions. GO annotations related to this gene include receptor binding and chemokine activity. An important paralog of this gene is CXCL2. This antimicrobial gene encodes a member of the CXC subfamily of chemokines. The encoded protein is a secreted growth factor that signals through the G-protein coupled receptor, CXC receptor 2. This protein plays a role in inflammation and as a chemoattractant for neutrophils. Aberrant expression of this protein is associated with the growth and progression of certain tumors. A naturally occurring processed form of this protein has increased chemotactic activity. Alternate splicing results in coding and non-coding variants of this gene. A pseudogene of this gene is found on chromosome 4.

## For Research Use Only

A Reliable Research Partner in Life Science and Medicine

Toll-free: 1-888-852-8623

Web: [www.elabscience.com](http://www.elabscience.com)

Tel: 1-832-243-6086

Email: [techsupport@elabscience.com](mailto:techsupport@elabscience.com)

Fax: 1-832-243-6017