

Recombinant MICB Monoclonal Antibody

catalog number: **AN300058P**

Note: Centrifuge before opening to ensure complete recovery of vial contents.

Description

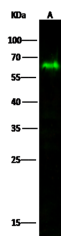
Reactivity	Human
Immunogen	Recombinant Human MICB protein
Host	Rabbit
Isotype	IgG
Clone	6A1
Purification	Protein A
Buffer	0.2 µm filtered solution in PBS

Applications

Recommended Dilution

WB	1:500-1:1000
-----------	--------------

Data



Western Blot with MICB Monoclonal Antibody at dilution of 1:500. Lane A: U87MG Whole Cell Lysate, Lysates/proteins at 30 µg per lane.

Observed-MW:67 kDa

Calculated-MW:40 kDa

Preparation & Storage

Storage	This antibody can be stored at 2°C-8°C for one month without detectable loss of activity. Antibody products are stable for twelve months from date of receipt when stored at -20°C to -80°C. Preservative-Free. Avoid repeated freeze-thaw cycles.
Shipping	Ice bag

Background

This gene encodes a heavily glycosylated protein which is a ligand for the NKG2D type II receptor. Binding of the ligand activates the cytolytic response of natural killer (NK) cells, CD8 alphabeta T cells, and gammadelta T cells which express the receptor. This protein is stress-induced and is similar to MHC class I molecules; however, it does not associate with beta-2-microglobulin or bind peptides. Alternative splicing results in multiple transcript variants.

For Research Use Only