

# KDM4D Polyclonal Antibody

catalog number: E-AB-11341

**Note:** Centrifuge before opening to ensure complete recovery of vial contents.

## Description

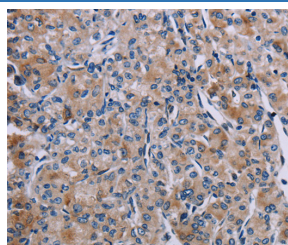
<b>Reactivity</b>	Human;Mouse;Rat
<b>Immunogen</b>	Recombinant protein of human KDM4D
<b>Host</b>	Rabbit
<b>Isotype</b>	IgG
<b>Purification</b>	Affinity purification
<b>Conjugation</b>	Unconjugated
<b>buffer</b>	Phosphate buffered solution, pH 7.4, containing 0.05% stabilizer and 50% glycerol.

## Applications

## Recommended Dilution

<b>IHC</b>	1:25-1:100
------------	------------

## Data



Immunohistochemistry of paraffin-embedded Human prostate cancer tissue using KDM4D Polyclonal Antibody at dilution

1:60

## Preparation & Storage

<b>Storage</b>	Store at -20°C Valid for 12 months. Avoid freeze / thaw cycles.
<b>Shipping</b>	The product is shipped with ice pack, upon receipt, store it immediately at the temperature recommended.

## Background

JMJD2D (Jumonji domain-containing protein 2D), also known as JHDM3D or KDM4D, is a 520 amino acid protein that belongs to the JHDM3 histone demethylase family. Localized to the nucleus, JMJD2D functions as a histone demethylase that removes specific methyl residues from Histone H3, thereby playing a crucial role in the histone code. JMJD2D binds iron as a cofactor and contains one JMJC domain and one JMJD domain, both of which are thought to exhibit enzymatic activity during chromatin remodeling events. In addition, JMJD2D forms a complex with the ligand-bound form of the androgen receptor (AR) and, through this interaction, activates AR expression. Overexpression of AR is associated with prostate cancer, suggesting that, via its ability to upregulate AR, JMJD2D may be involved in carcinogenesis.

## For Research Use Only