

KRT7/ Cytokeratin-7 Monoclonal Antibody

catalog number: AN200052P

Note: Centrifuge before opening to ensure complete recovery of vial contents.

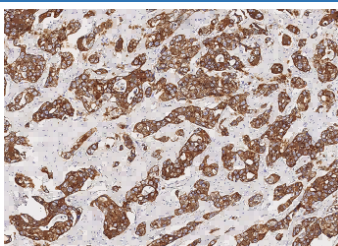
Description

Reactivity	Human
Immunogen	A synthetic peptide corresponding to the center region of the Human KRT7 / Cytokeratin-7
Host	Mouse
Isotype	IgG3
Clone	12F5
Purification	Protein A
Buffer	0.2 µm filtered solution in PBS with 10% Trehalose, 0.1% protein protectant, pH 7.0

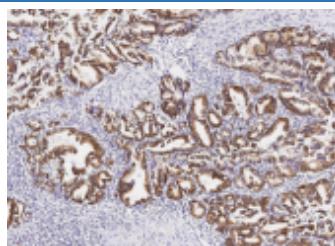
Applications Recommended Dilution

IHC-P	1:50-1:200
--------------	------------

Data



Immunohistochemistry of paraffin-embedded human breast carcinoma using KRT7 / Cytokeratin-7 Monoclonal Antibody at dilution of 1:50.



Immunohistochemistry of paraffin-embedded human gastric cancer using KRT7 / Cytokeratin-7 Monoclonal Antibody at dilution of 1:50.

Preparation & Storage

Storage	This antibody can be stored at 2°C-8°C for one month without detectable loss of activity. Antibody products are stable for twelve months from date of receipt when stored at -20°C to -80°C. Preservative-Free. Avoid repeated freeze-thaw cycles.
Shipping	Ice bag

Background

The protein encoded by this gene is a member of the keratin gene family. The type II cytokeratins consist of basic or neutral proteins which are arranged in pairs of heterotypic keratin chains coexpressed during differentiation of simple and stratified epithelial tissues. This type II cytokeratin is specifically expressed in the simple epithelia lining the cavities of the internal organs and in the gland ducts and blood vessels. The genes encoding the type II cytokeratins are clustered in a region of chromosome 12q12-q13. Alternative splicing may result in several transcript variants; however, not all variants have been fully described.

For Research Use Only