

Aptplex™ Human Cytokine 4-Plex Panel(C)

Catalog No: MPD003

Product size: 96 T

Intended Use

Aptplex™ Human Cytokine 4-Plex Panel(C) is based on multiplex bead-based technology, enabling simultaneous quantification of multiple analytes from a single sample. This kit is suitable for the *in vitro* quantitative detection of concentrations of the following cytokines in human serum, plasma, cell culture supernatants, and other biological fluids:

CCL2(MCP-1), CCL3(MIP-1 α), CCL4(MIP-1 β), CCL5(RANTES), CXCL10(IP-10), CXCL9(MIG), G-CSF, IFN- α , IFN- γ , IL-10, IL-12p70, IL-17A, IL-18, IL-1 β , IL-2, IL-2RA(sCD25), IL-4, IL-5, IL-6, IL-8(CXCL8), LTA, MMP-9, sCD106(VCAM-1), sCD273(sPD-L2), sCD54(ICAM-1), ST2, TGF- β 1(Free active), TNF- α , VEGF, GM-CSF

Components

Component	Component Name	96T	Storage
MPD003A	Premixed Antibody-Conjugated Beads	2.4 mL×2	2-8°C Protected from light
MPD003B	Biotinylated Detection Antibodies	4.8 mL×2	2-8°C
MPD003C	SA-PE (ready to use)	4.8 mL×2	2-8°C Protected from light
MPD003D	Lyophilized Standard	2 vials	2-8°C
MPD003E	Assay Buffer	5 mL×1	2-8°C
MPD003F	Wash Buffer	30 mL×2	2-8°C
	Plate Sealing Film	5 pieces	
	Manual	1 copy	

Detection Principle

The Aptplex™ assay is a multiplex bead based immunoassay that uses antibody-conjugated magnetic beads with distinct fluorescence intensities to capture target antigens simultaneously. Each target antigen is recognized by a specific capture antibody on the bead and binds with a corresponding biotinylated detection antibody to form a bead-analyte-detection antibody “sandwich complex”. Streptavidin-phycoerythrin (SA-PE) binds to the biotinylated detection antibodies producing a fluorescent signal proportional to the amount of each analyte. The fluorescence of each bead is measured using flow cytometry and correlated with a standard curve to determine analyte concentrations.

Detection Sample Types

- Serum EDTA Plasma
 Cell culture supernatants Other biological fluids

Storage

Material	Storage Conditions	Stability / Notes
Unopened kit	2-8 °C, protected from light	12 months
Opened kit	2-8 °C, protected from light	Up to 30 days
Reconstituted standard	2-8 °C, protected from light	Use within 24 hours

Sample Collection and

1) Serum

Allow whole blood to clot for 1 hour at room temperature or overnight at 2-8 °C, then centrifuge for 20 min at 1000 × g at 2-8 °C. Collect the supernatant for the assay.

2) Plasma

Collect using EDTA-Na₂ as an anticoagulant. Centrifuge 15 min at 1000 × g at 2-8 °C within 30 min of collection. Collect the supernatant for the assay.

3) Cell culture supernatant or other biological fluids

Centrifuge 20 min at 1000 × g at 2-8 °C. Collect the supernatant for the assay.

Materials Not Supplied

- U-bottom 96-well transparent plates
- Vortex mixer
- Incubator suitable for 96-well plate
- Magnetic separator
- Flow cytometer (with PE, APC and APC/Cy7 detection channels).

Standard Preparation Procedure

1. Prepare eight 0.6 mL microcentrifuge tubes and label them 0-7. Leave tube 7 empty. Add 150 μ L of **Assay Buffer** to tubes 0-6.
2. **Reconstitute the lyophilized standard**
 - Briefly centrifuge the tube at 500 × g for 10 s to collect the powder at the bottom.
 - Add 500 μ L of **Assay Buffer** to the vial. Let it stand for 5 min.
 - Mix gently until the lyophilized standard is completely dissolved.
 - Transfer the entire solution to tube 7. This is the highest

concentration standard.

3. Prepare serial dilutions

- Transfer 50 μ L from tube 7 into tube 6 and mix thoroughly (1:3.2 dilution).
- Serially dilute by transferring 100 μ L from each tube to the next lower tube (tube6 \rightarrow 5 \rightarrow 4 \rightarrow 3 \rightarrow 2 \rightarrow 1), mixing thoroughly at each step.
- Tube 0 contains Assay Buffer only and serves as the zero standard.

Note: The exact concentration of the highest standard is indicated on the standard vial label.

Procedure

1. Bead and Sample incubation

Add 50 μ L of **Premixed Antibody-Conjugated Beads** (vortex \geq 15 s before use) and 50 μ L of sample or standard to each well of a 96-well plate. Cover the plate with a sealing film and incubate on a microplate shaker at room temperature, 600 rpm, protected from light, for 1 hour.

2. Detection antibody incubation

After incubation, place the plate on a magnetic separator for 1 minute and remove the supernatant. Add 100 μ L of **Biotinylated Detection Antibodies** to each well, cover the plate, and incubate under same conditions for 1 hour.

3. SA-PE incubation and washing

After incubation, place the plate on a magnetic separator for 1 minute remove the supernatant, and wash once with 200 μ L of **Wash Buffer**. Remove the wash buffer. and add 100 μ L of

SA-PE to each well. Cover the plate with a sealing film and incubate on a shaker at room temperature, 600 RPM, protected from light, for 30 minutes. Following incubation, wash twice with 200 μ L of Wash Buffer, separating each time.

4. Final resuspension and detection

Resuspend the beads in 200 μ L of **Wash Buffer** and proceed with detection using the a flow cytometer under appropriate settings.

Experimental conditions may be adjusted according to sample type or available equipment.

Flow Cytometry Detection

Sample Test Data Acquisition

- 1) Acquire samples on a flow cytometer using manual gating analysis.
- 2) Create an FSC-H/SSC-H scatter plot. Adjust FSC and SSC to identify the cytokine bead population using a rectangular P1 gate (Figure 1).

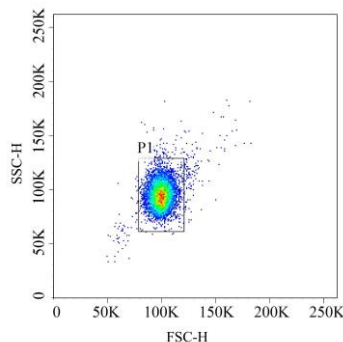


Figure 1

- 3) Create an APC-H/APC-Cy7-H scatter plot. From the P1-gated bead population, identify individual bead populations

and gate each cytokine-specific bead population using rectangular gates (Figure 2).

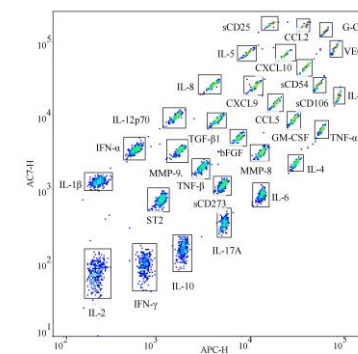


Figure 2

Data Analysis

- 1) Set data acquisition to collect at least 200 beads per cytokine gate. For example, when analyzing four bead populations, collect a minimum of 800 total beads.
- 2) Calculate the median fluorescence intensity (MFI) of standard and samples. Subtract the MFI of the blank well to obtain the corrected MFI value.
- 3) Generate a standard curve by plotting concentration (x-axis) and MFI (y-axis) using a log-log scale, and fit the curve with a four-parameter logistic (4-PL) model.
- 4) Calculate the concentration of unknown from the calibration curve of each analyte.
- 5) If the sample MFI exceeds the upper limit of the standard curve, dilute the sample appropriately and repeat the measurement. Multiply the calculated concentration by the corresponding dilution factor.

Performance parameters

1. Detection range:

For details, please refer to COA

2. Limit of Blank (LoB):

The LoB for all analytes is ≤ 8 pg/mL.

3. Recovery:

The mean recovery ranges from 70% to 120%.

4. Precision:

The intra-assay and inter-assay coefficients of variation (CV) are $\leq 15\%$.

5. Specificity:

No significant cross-reactivity is observed among the analytes included in this kit.

Precautions

1. This product is intended for **research use only** and must be used by qualified professionals. Personnel responsible for data interpretation and reporting should have appropriate technical training.
2. Follow standard laboratory safety practices and reagent handling procedures. This product contains fluorescent dyes. Avoid direct contact with skin and eyes, prevent contamination of food and beverages, and always wear appropriate personal protective equipment, including gloves, during handling.
3. Improper flow cytometer calibration, inadequate fluorescence compensation, or incorrect gating strategies may lead to inaccurate results. Refer to the instrument manufacturer's manual and ensure proper calibration to

sample acquisition.

4. Before use, vortex the bead suspension thoroughly to ensure uniform bead dispersion and to prevent bead aggregation, which may affect assay performance.
5. To prevent cross-contamination, change pipette tips between each well, exercise caution when removing the plate sealer to avoid contact with adjacent wells use fresh tips for different standards or samples, and avoid bubble formation during pipetting. Use of a multichannel pipette is recommended for wash steps.
6. Protect all reactions involving detection antibodies and SA-PE from light throughout the assay to maintain fluorescence signal integrity.
7. Do not mix reagents from different lot numbers or substitute reagents from other manufacturers. Use all components according to the instructions provided in this manual and within their stated expiration dates.