

## Recombinant FOXA1 Monoclonal Antibody

catalog number: **AN301524L**

**Note:** Centrifuge before opening to ensure complete recovery of vial contents.

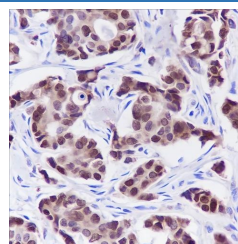
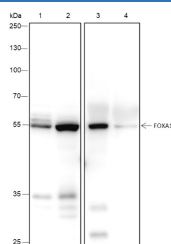
### Description

<b>Reactivity</b>	Human;Rat;Mouse
<b>Immunogen</b>	Recombinant human FOXA1 fragment
<b>Host</b>	Rabbit
<b>Isotype</b>	IgG, $\kappa$
<b>Clone</b>	A223
<b>Purification</b>	Protein A purified
<b>Buffer</b>	PBS, 50% glycerol, 0.05% Proclin 300, 0.05% protein protectant.

### Applications Recommended Dilution

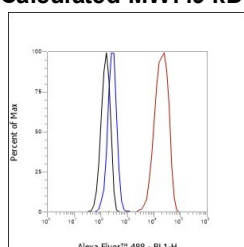
<b>WB</b>	1:500-1:2000
<b>IHC</b>	1:200-1:1000
<b>FCM</b>	1:50-1:100

### Data



Western Blot with FOXA1 Monoclonal Antibody at dilution of 1:2000. Lane 1: HeLa, Lane 2: HepG2, Lane 3: Mouse lung, Lane 4: Rat lung  
Immunohistochemistry of paraffin-embedded Human breast cancer using FOXA1 Monoclonal Antibody at dilution of 1:1000.

**Observed-MW:52 kDa**  
**Calculated-MW:49 kDa**



Flow cytometric analysis of human FOXA1 expression on HepG2 cells. Cells were stained with purified anti-Human FOXA1, then a Alexa Fluor 488-conjugated second step antibody. The histogram were derived from events with the forward and side light-scatter characteristics of intact cells.

### Preparation & Storage

<b>Storage</b>	Store at -20°C Valid for 12 months. Avoid freeze / thaw cycles.
<b>Shipping</b>	Ice bag

### Background

### For Research Use Only

Toll-free: 1-888-852-8623  
Web: [www.elabscience.com](http://www.elabscience.com)

Tel: 1-832-243-6086  
Email: [techsupport@elabscience.com](mailto:techsupport@elabscience.com)

Fax: 1-832-243-6017

Rev. V1.0

Forkhead transcription factor (FOXA1) is a pioneering factor in the development of some organs and certain cancers. It opens tight chromatin by interacting with nucleosomal core histones. FOXA1 can bind to cis-acting elements and recruit other transcription factors to induce transcription. FOXA1 is involved in embryonic development, establishment of tissue-specific gene expression and regulation of gene expression in differentiated tissues, and participates in the development of a variety of endoderm-derived organ systems, such as liver, pancreas, lung and prostate. FOXA1 is related to many diseases and plays a role in hormone-dependent diseases such as breast cancer and prostate cancer.