

## Recombinant Ly-6K Monoclonal Antibody

catalog number: **AN301716L**

**Note:** Centrifuge before opening to ensure complete recovery of vial contents.

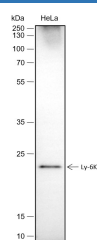
### Description

<b>Reactivity</b>	Human;
<b>Immunogen</b>	Recombinant human Ly-6K fragment
<b>Host</b>	Rabbit
<b>Isotype</b>	IgG, $\kappa$
<b>Clone</b>	A424
<b>Purification</b>	Protein A purified
<b>Buffer</b>	PBS, 50% glycerol, 0.05% Proclin 300, 0.05% protein protectant.

### Applications

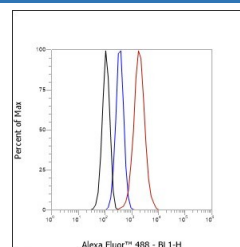
Applications	Recommended Dilution
<b>WB</b>	1:500-1:2000
<b>FCM</b>	1:50-1:100

### Data



Western Blot with Ly-6K Monoclonal Antibody at dilution of 1:2000. Lane 1: HeLa

**Observed-MW:19 kDa**  
**Calculated-MW:19 kDa**



Flow cytometric analysis of human Ly-6K expression on MCF-7 cells. Cells were stained with purified anti-Human Ly-6K, then a Alexa Fluor 488-conjugated second step antibody. The histogram were derived from events with the forward and side light-scatter characteristics of intact cells.

### Preparation & Storage

<b>Storage</b>	Store at -20°C Valid for 12 months. Avoid freeze / thaw cycles.
<b>Shipping</b>	Ice bag

### Background

LY6K is a member of LY6/urokinase-type plasminogen activator receptor family of proteins and has a glycosylphosphatidylinositol (GPI) anchor that results in its localization on the plasma membrane. LY6 gene perform a variety of functions in spermatogenesis, neutrophil activation, complement-mediated lysis, and macrophage biology. Required for sperm migration into the oviduct and male fertility by controlling binding of sperm to zona pellucida. May play a role in cell growth.

### For Research Use Only