

Recombinant CGREF1 Monoclonal Antibody

catalog number: AN300268P

Note: Centrifuge before opening to ensure complete recovery of vial contents.

Description

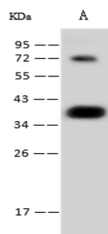
Reactivity	Human
Immunogen	Recombinant Human CGREF1 Protein
Host	Rabbit
Isotype	IgG
Clone	12B4
Purification	Protein A
Buffer	0.2 µm filtered solution in PBS

Applications

Recommended Dilution

WB	1:500-1:2000
-----------	--------------

Data



Western Blot with CGREF1 Monoclonal Antibody at dilution of 1:500. Lane A: HL-60 Whole Cell Lysate, Lysates/proteins at 30 µg per lane.

Observed-MW:37 kDa

Calculated-MW:32 kDa

Preparation & Storage

Storage	This antibody can be stored at 2°C-8°C for one month without detectable loss of activity. Antibody products are stable for twelve months from date of receipt when stored at -20°C to -80°C. Preservative-Free. Avoid repeated freeze-thaw cycles.
Shipping	Ice bag

Background

Mediates cell-cell adhesion in a calcium-dependent manner (By similarity). Able to inhibit growth in several cell lines.

For Research Use Only