

Recombinant CD3d/CD3 delta Monoclonal Antibody

catalog number: **AN300212P**

Note: Centrifuge before opening to ensure complete recovery of vial contents.

Description

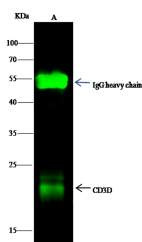
Reactivity	Human
Immunogen	Recombinant Human CD3D protein
Host	Rabbit
Isotype	IgG
Clone	9A2
Purification	Protein A
Buffer	0.2 µm filtered solution in PBS

Applications

Recommended Dilution

WB	1:500-1:1000
IP	1-2 µL/mg of lysate

Data



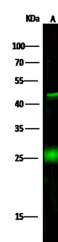
Immunoprecipitation analysis using 0.5 µL anti-CD3D Monoclonal Antibody and 15 µl of 50 % Protein G agarose.

Western blot was performed from the immunoprecipitate using CD3D Monoclonal Antibody at a dilution of 1:500.

Lane A: 0.5 mg HuT78 Whole Cell Lysate

Observed-MW: 20 kDa

Calculated-MW: 20 kDa



Western Blot with CD3d / CD3 delta Monoclonal Antibody at dilution of 1:500. Lane A: Jurkat Whole Cell Lysate, Lysates/proteins at 30 µg per lane.

Observed-MW: 20 kDa

Calculated-MW: 20 kDa

Preparation & Storage

Storage This antibody can be stored at 2°C-8°C for one month without detectable loss of activity. Antibody products are stable for twelve months from date of receipt when stored at -20°C to -80°C. Preservative-Free. Avoid repeated freeze-thaw cycles.

Shipping Ice bag

Background

The protein encoded by this gene is part of the T-cell receptor/CD3 complex (TCR/CD3 complex) and is involved in T-cell development and signal transduction. The encoded membrane protein represents the delta subunit of the CD3 complex, and along with four other CD3 subunits, binds either TCR alpha/beta or TCR gamma/delta to form the TCR/CD3 complex on the surface of T-cells. Defects in this gene are a cause of severe combined immunodeficiency autosomal recessive T-cell-negative/B-cell-positive/NK-cell-positive (SCIDBNK). Two transcript variants encoding different isoforms have been found for this gene. Other variants may also exist, but the full-length nature of their transcripts has yet to be defined.

For Research Use Only