

ACBD6 Monoclonal Antibody

catalog number: **AN200206P**

Note: Centrifuge before opening to ensure complete recovery of vial contents.

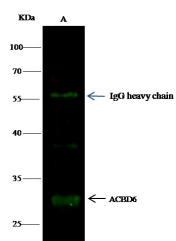
Description

Reactivity	Human
Immunogen	Recombinant Human ACBD6 protein
Host	Mouse
Isotype	IgG1
Clone	11G1
Purification	Protein A
Buffer	0.2 µm filtered solution in PBS

Applications Recommended Dilution

WB	1:500-1:1000
IP	1-2 µL/mg of lysate

Data



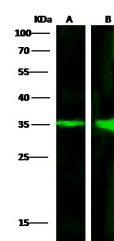
Immunoprecipitation analysis using 0.5 µL anti-ACBD6 Monoclonal Antibody and 15 µL of 50 % Protein G agarose.

Western blot was performed from the immunoprecipitate using ACBD6 Monoclonal Antibody at a dilution of 1:500.

Lane A: 0.5 mg hela Whole Cell Lysate

Observed-MW: 35 kDa

Calculated-MW: 31 kDa



Western Blot with ACBD6 Monoclonal Antibody at dilution of 1:500 dilution. Lane A: 293T Whole Cell Lysate, Lysates/proteins at 30 µg per lane.

Observed-MW: 35 kDa

Calculated-MW: 31 kDa

Preparation & Storage

Storage	This antibody can be stored at 2°C-8°C for one month without detectable loss of activity. Antibody products are stable for twelve months from date of receipt when stored at -20°C to -80°C. Preservative-Free. Avoid repeated freeze-thaw cycles.
Shipping	Ice bag

Background

Binds long-chain acyl-coenzyme A molecules with a strong preference for unsaturated C18:1-CoA, lower affinity for unsaturated C20:4-CoA, and very weak affinity for saturated C16:0-CoA. Does not bind fatty acids.

For Research Use Only