

## Recombinant IL-10 Monoclonal Antibody

catalog number: **AN301563L**

**Note:** Centrifuge before opening to ensure complete recovery of vial contents.

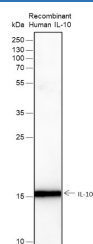
### Description

<b>Reactivity</b>	Human;
<b>Immunogen</b>	Recombinant human IL-10 fragment
<b>Host</b>	Rabbit
<b>Isotype</b>	IgG, κ
<b>Clone</b>	A262
<b>Purification</b>	Protein A purified
<b>Buffer</b>	PBS, 50% glycerol, 0.05% Proclin 300, 0.05% protein protectant.

### Applications

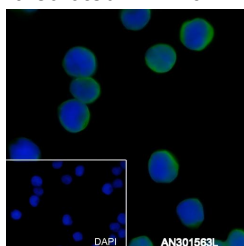
Applications	Recommended Dilution
<b>WB</b>	1:500-1:1000
<b>IHC</b>	1:200-1:1000
<b>IF</b>	1:50

### Data

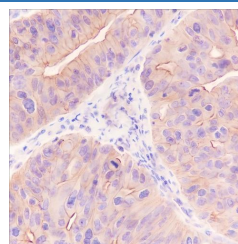


Western Blot with IL-10 Monoclonal Antibody at dilution of 1:1000. Lane 1: Recombinant Human IL-10

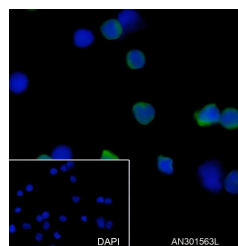
**Observed-MW:18 kDa**  
**Calculated-MW:20 kDa**



Immunofluorescent analysis of (4% Paraformaldehyde) fixed MOLT4 cells using anti-IL-10 Monoclonal Antibody at dilution of 1:50.



Immunohistochemistry of paraffin-embedded Human colon cancer using IL-10 Monoclonal Antibody at dilution of 1:1000.



of 1:50.

### Preparation & Storage

<b>Storage</b>	Store at -20°C Valid for 12 months. Avoid freeze / thaw cycles.
<b>Shipping</b>	Ice bag

### Background

Major immune regulatory cytokine that acts on many cells of the immune system where it has profound anti-inflammatory functions, limiting excessive tissue disruption caused by inflammation.

### For Research Use Only

Toll-free: 1-888-852-8623  
Web: [www.elabscience.com](http://www.elabscience.com)

Tel: 1-832-243-6086  
Email: [techsupport@elabscience.com](mailto:techsupport@elabscience.com)

Fax: 1-832-243-6017

Rev. V1.0