

Recombinant EphA2 Monoclonal Antibody

catalog number: **AN301514L**

Note: Centrifuge before opening to ensure complete recovery of vial contents.

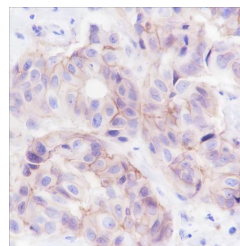
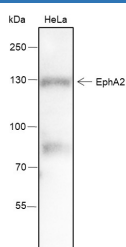
Description

Reactivity	Human;
Immunogen	Recombinant human EphA2 fragment
Host	Rabbit
Isotype	IgG, κ
Clone	A213
Purification	Protein A purified
Buffer	PBS, 50% glycerol, 0.05% Proclin 300, 0.05% protein protectant.

Applications Recommended Dilution

WB	1:500-1:1000
IHC	1:200-1:1000

Data



Western Blot with EphA2 Monoclonal Antibody at dilution of 1:1000. Lane 1: HeLa
Observed-MW:130 kDa
Calculated-MW:109 kDa

Immunohistochemistry of paraffin-embedded Human breast cancer using EphA2 Monoclonal Antibody at dilution of 1:1000.

Preparation & Storage

Storage	Store at -20°C Valid for 12 months. Avoid freeze / thaw cycles.
Shipping	Ice bag

Background

Receptor tyrosine kinase which binds promiscuously membrane-bound ephrin-A family ligands residing on adjacent cells, leading to contact-dependent bidirectional signaling into neighboring cells. The signaling pathway downstream of the receptor is referred to as forward signaling while the signaling pathway downstream of the ephrin ligand is referred to as reverse signaling. Activated by the ligand ephrin-A1/EFNA1 regulates migration, integrin-mediated adhesion, proliferation and differentiation of cells. Regulates cell adhesion and differentiation through DSG1/desmoglein-1 and inhibition of the ERK1/ERK2 (MAPK3/MAPK1, respectively) signaling pathway.

For Research Use Only