

Elab Fluor® 647 Anti-Mouse Ly-6A/E (Sca-1) Antibody[E13-161.7]

Catalog Number: AN00924M

Note: Centrifuge before opening to ensure complete recovery of vial contents.

Description

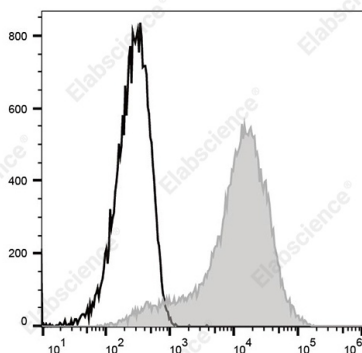
Reactivity	Mouse
Host	Rat
Isotype	Rat IgG2a, κ
Clone No.	E13-161.7
Isotype Control	Elab Fluor® 647 Rat IgG2a, κ Isotype Control[2A3] [Product E-AB-F09832M]
Conjugation	Elab Fluor® 647
Conjugation Information	Elab Fluor® 647 is designed to be excited by the Red laser (627-640 nm) and detected using an optical filter centered near 670 nm (e.g., a 660/20 nm bandpass filter).
Storage Buffer	Phosphate buffered solution, pH 7.2, containing 0.09% stabilizer.

Applications

Recommended usage

FCM Each lot of this antibody is quality control tested by flow cytometric analysis. **The amount of the reagent is suggested to be used 5 μL of antibody per test (million cells in 100 μL staining volume or per 100 μL of whole blood).** Please check your vial before the experiment. Since applications vary, the appropriate dilutions must be determined for individual use.

Data



Staining of C57BL/6 murine splenocytes with Elab Fluor® 647 Anti-Mouse Ly-6A/E (Sca-1) Antibody[E13-161.7] (filled

gray histogram) or Elab Fluor® 647 Rat IgG2a, κ Isotype Control (empty black histogram). Total viable cells were used for analysis.

Preparation & Storage

Storage	Keep as concentrated solution. This product can be stored at 2-8°C for 24 months. Please protected from prolonged exposure to light and do not freeze.
Shipping	Ice bag

Antigen Information

Alternate Names	Sca-1
Uniprot ID	P05533
Gene ID	110454

For Research Use Only

Background

Ly-6A/E is an 18 kD member of the Ly-6 multigene family also known as Sca-1. Ly6A/E is a glycosylphosphatidylinositol (GPI)-linked protein expressed on hematopoietic stem cells. In mice expressing the Ly-6.2 haplotype (e.g., AKR, C57BL, C57BR, DBA/2, SJL, SWR, and 129), Ly-6A/E is also expressed on peripheral B lymphocytes and thymic and peripheral T lymphocytes. Strains expressing the Ly-6.1 haplotype (e.g., BALB/c, CBA, C3H/He, DBA/1, and NZB) have low Ly-6A/E expression on resting peripheral lymphocytes. The expression of Ly-6A/E on lymphocytes is upregulated upon activation from both Ly6.1 and Ly6.2 haplotype mice. Ly-6A/E is thought to be involved in the regulation of both T and B cell responses. The E13-161.7 antibody has been reported to be useful for immunohistochemical staining of frozen sections, immunoprecipitation, flow cytometry, and complement-mediated cytotoxicity.