

PE Anti-Mouse CD16 Antibody[S17014E]

Catalog Number: AN00949D

Note: Centrifuge before opening to ensure complete recovery of vial contents.

Description

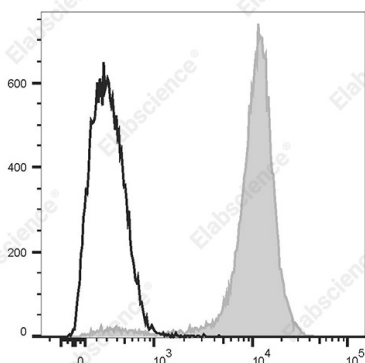
Reactivity	Mouse
Host	Rat
Isotype	Rat IgG2a, κ
Clone No.	S17014E
Isotype Control	PE Rat IgG2a, κ Isotype Control[2A3] [Product E-AB-F09832D]
Conjugation	PE
Conjugation Information	PE is designed to be excited by the Blue (488 nm), Green (532 nm) and Yellow-Green (561 nm) lasers and detected using an optical filter centered near 575 nm (e.g., a 585/42 nm bandpass filter).
Storage Buffer	Phosphate buffered solution, pH 7.2, containing 0.09% stabilizer.

Applications

Recommended usage

FCM	Each lot of this antibody is quality control tested by flow cytometric analysis. The amount of the reagent is suggested to be used 5 μL of antibody per test (million cells in 100 μL staining volume or per 100 μL of whole blood). Please check your vial before the experiment. Since applications vary, the appropriate dilutions must be determined for individual use.
------------	--

Data



Staining of C57BL/6 murine bone marrow cells with PE Anti-Mouse CD16 Antibody[S17014E] (filled gray histogram) or PE Rat IgG2a, κ Isotype Control (empty black histogram). Total viable cells were used for analysis.

Preparation & Storage

Storage	Keep as concentrated solution. This product can be stored at 2-8°C for 24 months. Please protected from prolonged exposure to light and do not freeze.
Shipping	Ice bag

Antigen Information

Alternate Names	Fcgr3;Fc receptor;IgG;low affinity III;Fc gamma receptor;Fc gamma receptor 3
Uniprot ID	P08508
Gene ID	14131

For Research Use Only

Background

CD16 also known as Fcγ3 is a 50-65 kD type I transmembrane protein, member of the Fc gamma receptor family and Ig superfamily. CD16 is expressed on most myeloid cells including monocytes, macrophages, dendritic cells, and is also expressed by NK cells and NKT cells. CD16 is involved in cell activation, phagocytosis, and antibody-dependent cell-mediated cytotoxicity (ADCC); its ligands are IgG1, IgG2a and IgG2b.