

APOL1 Polyclonal Antibody

catalog number: E-AB-12728

Note: Centrifuge before opening to ensure complete recovery of vial contents.

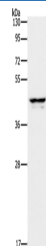
Description

Reactivity	Human
Immunogen	Synthetic peptide of human APOL1
Host	Rabbit
Isotype	IgG
Purification	Affinity purification
Buffer	Phosphate buffered solution, pH 7.4, containing 0.05% stabilizer and 50% glycerol.

Applications

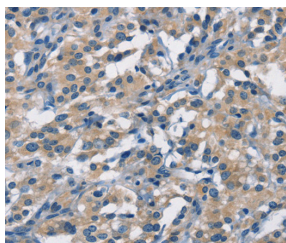
Applications	Recommended Dilution
WB	1:500-1:2000
IHC	1:50-1:200

Data

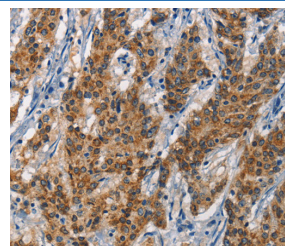


Western Blot analysis of Human plasma tissue using APOL1 Polyclonal Antibody at dilution of 1:400

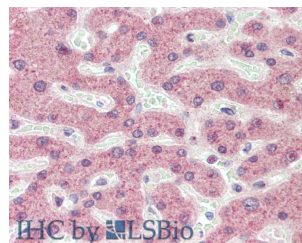
Calculated-MW:44 kDa



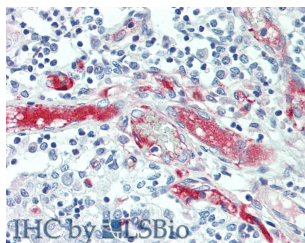
Immunohistochemistry of paraffin-embedded Human thyroid cancer using APOL1 Polyclonal Antibody at dilution of 1:40



Immunohistochemistry of paraffin-embedded Human gastric cancer using APOL1 Polyclonal Antibody at dilution of 1:40



Immunohistochemistry of paraffin-embedded Liver tissue using APOL1 Polyclonal Antibody at dilution of 1:100(Elabscience Product Detected by Lifespan).



Immunohistochemistry of paraffin-embedded Thymus tissue using APOL1 Polyclonal Antibody at dilution of 1:100(Elabscience Product Detected by Lifespan).

Preparation & Storage

For Research Use Only

Toll-free: 1-888-852-8623
Web: www.elabscience.com

Tel: 1-832-243-6086
Email: techsupport@elabscience.com

Fax: 1-832-243-6017

Rev. V1.8

Storage

Store at -20°C Valid for 12 months. Avoid freeze / thaw cycles.

Shipping

The product is shipped with ice pack, upon receipt, store it immediately at the temperature recommended.

Background

This gene encodes a secreted high density lipoprotein which binds to apolipoprotein A-I. Apolipoprotein A-I is a relatively abundant plasma protein and is the major apoprotein of HDL. It is involved in the formation of most cholesteryl esters in plasma and also promotes efflux of cholesterol from cells. This apolipoprotein L family member may play a role in lipid exchange and transport throughout the body, as well as in reverse cholesterol transport from peripheral cells to the liver. Several different transcript variants encoding different isoforms have been found for this gene.

For Research Use Only