

## SFXN2 Polyclonal Antibody

catalog number: **E-AB-91918**

**Note:** Centrifuge before opening to ensure complete recovery of vial contents.

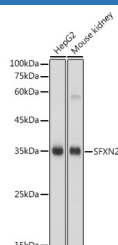
### Description

<b>Reactivity</b>	Human;Mouse;Rat
<b>Immunogen</b>	Recombinant fusion protein of human SFXN2
<b>Host</b>	Rabbit
<b>Isotype</b>	IgG
<b>Purification</b>	Affinity purification
<b>Buffer</b>	Phosphate buffered solution, pH 7.4, containing 0.05% stabilizer and 50% glycerol.

### Applications

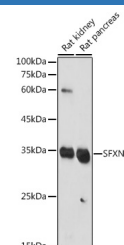
<b>WB</b>	1:500-1:2000
-----------	--------------

### Data



Western blot analysis of extracts of various cell lines using SFXN2 Polyclonal Antibody at 1:1000 dilution.

**Observed-MW:36 kDa**



Western blot analysis of extracts of various cell lines using SFXN2 Polyclonal Antibody at 1:1000 dilution.

**Observed-MW:36 kDa**

### Preparation & Storage

<b>Storage</b>	Store at -20°C Valid for 12 months. Avoid freeze / thaw cycles.
<b>Shipping</b>	The product is shipped with ice pack, upon receipt, store it immediately at the temperature recommended.

### Background

Mitochondrial amino-acid transporter that mediates transport of serine into mitochondria.

### For Research Use Only