

Recombinant WDR1 Monoclonal Antibody

catalog number: E-AB-81620

Note: Centrifuge before opening to ensure complete recovery of vial contents.

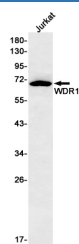
Description

| | |
|---------------------|---|
| Reactivity | Human |
| Immunogen | A synthetic peptide of human WDR1 |
| Host | Rabbit |
| Isotype | IgG |
| Clone | R01-6D6 |
| Purification | Affinity Purified |
| Buffer | 50mM Tris-Glycine(pH 7.4), 0.15M NaCl, 40% Glycerol, 0.05% stabilizer and 0.05% protective protein. |

Applications

| Applications | Recommended Dilution |
|--------------|----------------------|
| WB | 1:1000-1:2000 |
| IHC | 1:50-1:100 |
| IF | 1:50-1:100 |

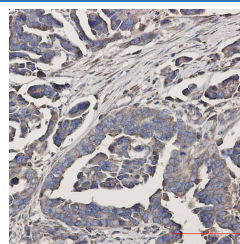
Data



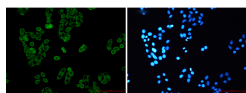
Western blot detection of WDR1 in Jurkat cell lysates using WDR1 Rabbit mAb(1:500 diluted). Predicted band size: 66kDa. Observed band size: 66kDa.

Observed-MW: 66 kDa

Calculated-MW: 66 kDa



Immunohistochemistry of WDR1 in paraffin-embedded Human Cholangiocarcinoma using WDR1 Rabbit mAb at dilution 1:50



Immunofluorescence of WDR1 (green) in HeLa using WDR1 Rabbit mAb at dilution 1:50, and DAPI (blue)

Preparation & Storage

| | |
|-----------------|--|
| Storage | Store at -20°C Valid for 12 months. Avoid freeze / thaw cycles. |
| Shipping | The product is shipped with ice pack, upon receipt, store it immediately at the temperature recommended. |

Background

For Research Use Only

Toll-free: 1-888-852-8623
Web: www.elabscience.com

Tel: 1-832-243-6086
Email: techsupport@elabscience.com

Fax: 1-832-243-6017

Rev. V1.7

This gene encodes a protein containing 9 WD repeats. WD repeats are approximately 30- to 40-amino acid domains containing several conserved residues, mostly including a trp-asp at the C-terminal end. WD domains are involved in protein-protein interactions. The encoded protein may help induce the disassembly of actin filaments. Two transcript variants encoding different isoforms have been found for this gene.