

Elab Fluor® 700 Anti-Human CD163 Antibody[GHI/61]

Catalog Number: E-AB-F1298M1

Note: Centrifuge before opening to ensure complete recovery of vial contents.

Description

Reactivity	Human
Host	Mouse
Isotype	Mouse IgG1, κ
Clone No.	GHI/61
Isotype Control	Elab Fluor® 700 Mouse IgG1, κ Isotype Control[MOPC-21] [Product E-AB-F09792M1]
Conjugation	Elab Fluor® 700
Conjugation Information	Elab Fluor® 700 is designed to be excited by the Red laser (627-640 nm) and detected using an optical filter centered near 719 nm (e.g., a 725/40 nm bandpass filter).
Storage Buffer	Phosphate buffered solution, pH 7.2, containing 0.09% sodium azide and 1% BSA.

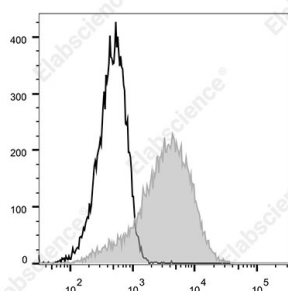
Applications

Recommended usage

FCM

Each lot of this antibody is quality control tested by flow cytometric analysis. **The amount of the reagent is suggested to be used 5 μL of antibody per test (million cells in 100 μL staining volume or per 100 μL of whole blood).** Please check your vial before the experiment. Since applications vary, the appropriate dilutions must be determined for individual use.

Data



Staining of normal human peripheral blood cells with Elab Fluor® 700 Anti-Human CD163 Antibody[GHI/61](filled gray histogram) or Elab Fluor® 700 Mouse IgG1, κ Isotype Control(empty black histogram). Cells in the monocytes gate were used for analysis.

Preparation & Storage

Storage	Keep as concentrated solution. This product can be stored at 2-8°C for 12 months. Please protected from prolonged exposure to light and do not freeze.
Shipping	Ice bag

Antigen Information

Alternate Names	ED2(rat)Hemoglobin/Haptoglobin Complex ReceptorM130RM3/1 macrophage-associated antigenp155;GHI/61
Uniprot ID	Q86VB7

For Research Use Only

Gene ID

9332

Background

CD163 is a member of the group B scavenger receptor cysteine-rich superfamily, also known as GHI/61, M130, RM3/1, p155, hemoglobin-haptoglobin complex receptor, or macrophage-associated antigen. It is a 134 kD (non-reduced)/155 kD (reduced) glycoprotein primarily expressed on macrophages, Kupffer cells, monocytes, a subset of dendritic cells, and a subset of hematopoietic stem/progenitor cells. CD163 binds to haptoglobin-hemoglobin complex and TWEAK, and plays a role in clearing hemoglobin and regulating cytokine production by macrophages. Membrane CD163 can be cleaved by metalloproteinases (MMP), resulting in a soluble form. Elevated serum level of sCD163 has been implicated in many kinds of inflammatory diseases.