

## PRPF19 Polyclonal Antibody

catalog number: **E-AB-61312**

**Note:** Centrifuge before opening to ensure complete recovery of vial contents.

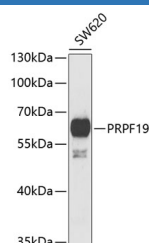
### Description

<b>Reactivity</b>	Human;Mouse;Rat
<b>Immunogen</b>	Recombinant fusion protein of human PRPF19 (NP_055317.1).
<b>Host</b>	Rabbit
<b>Isotype</b>	IgG
<b>Purification</b>	Affinity purification
<b>Buffer</b>	Phosphate buffered solution, pH 7.4, containing 0.05% stabilizer and 50% glycerol.

### Applications Recommended Dilution

<b>WB</b>	1:500-1:2000
-----------	--------------

### Data



Western blot analysis of extracts of SW620 cells using PRPF19 Polyclonal Antibody at dilution of 1:1000.

**Observed-MW:60 kDa**

**Calculated-MW:55 kDa**

### Preparation & Storage

<b>Storage</b>	Store at -20°C Valid for 12 months. Avoid freeze / thaw cycles.
<b>Shipping</b>	The product is shipped with ice pack, upon receipt, store it immediately at the temperature recommended.

### Background

PRPF19 (Pre-mRNA Processing Factor 19) is a Protein Coding gene. Diseases associated with PRPF19 include Poikiloderma With Neutropenia and Retinitis Pigmentosa 19. Among its related pathways are Transcription-Coupled Nucleotide Excision Repair (TC-NER) and Gene Expression. Gene Ontology (GO) annotations related to this gene include identical protein binding and ubiquitin-protein transferase activity. An important paralog of this gene is WDR36.

### For Research Use Only