

NR2F2 Polyclonal Antibody

catalog number: E-AB-17411

Note: Centrifuge before opening to ensure complete recovery of vial contents.

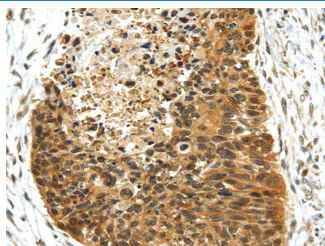
Description

Reactivity	Human;Mouse;Rat
Immunogen	Synthetic peptide of human NR2F2
Host	Rabbit
Isotype	IgG
Purification	Affinity purification
Buffer	Phosphate buffered solution, pH 7.4, containing 0.05% stabilizer and 50% glycerol.

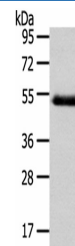
Applications Recommended Dilution

WB	1:500-2000
IHC	1:25-100

Data



Immunohistochemistry of paraffin-embedded Human esophagus cancer using NR2F2 Polyclonal Antibody at dilution of 1/25



Western Blot analysis of Human placenta tissue using NR2F2 Polyclonal Antibody at dilution of 1/200

Calculated-MW:46 kDa

Preparation & Storage

Storage	Store at -20°C Valid for 12 months. Avoid freeze / thaw cycles.
Shipping	The product is shipped with ice pack, upon receipt, store it immediately at the temperature recommended.

Background

This gene encodes a member of the steroid thyroid hormone superfamily of nuclear receptors. The encoded protein is a ligand inducible transcription factor that is involved in the regulation of many different genes. Alternate splicing results in multiple transcript variants.

For Research Use Only