

Recombinant Mouse CCL6/C10 Protein(Trx Tag)

Catalog Number: PDEM100152

Note: Centrifuge before opening to ensure complete recovery of vial contents.

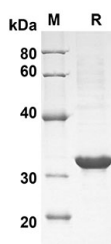
Description

Species	Mouse
Source	E.coli-derived Mouse CCL6/C10 protein Gly22-Ala116, with an N-terminal Trx
Mol_Mass	30.3 kDa
Accession	P27784
Bio-activity	Not validated for activity

Properties

Purity	> 90% as determined by reducing SDS-PAGE.
Endotoxin	< 10 EU/mg of the protein as determined by the LAL method
Storage	Generally, lyophilized proteins are stable for up to 12 months when stored at -20 to -80 °C. Reconstituted protein solution can be stored at 4-8°C for 2-7 days. Aliquots of reconstituted samples are stable at < -20°C for 3 months.
Shipping	This product is provided as lyophilized powder which is shipped with ice packs.
Formulation	Lyophilized from a 0.2 µm filtered solution in PBS with 5% Trehalose and 5% Mannitol.
Reconstitution	It is recommended that sterile water be added to the vial to prepare a stock solution of 0.5 mg/mL. Concentration is measured by UV-Vis.

Data



SDS-PAGE analysis of Mouse CCL6/C10 proteins , 2µg/lane
of Recombinant Mouse CCL6/C10 proteins was resolved
with SDS-PAGE under reducing conditions , showing bands
at 32 KD

Background

In mice , CCL6/C10 is expressed in cells from neutrophil and macrophage lineages , and can be greatly induced under conditions suitable for myeloid cell differentiation. It is highly expressed in bone marrow cultures that have been stimulated with the cytokine GM-CSF. Some low levels of gene expression also occur in certain cell lines of myeloid origin (e.g. the immature myeloid cell lines DA3 and 32D cl3 , and the macrophage cell line P388D) that can also be greatly induced in culture with GM-CSF. However , in activated T cell lines , expression of CCL6/C10 is greatly reduced. CCL6/C10 can also be induced in the Mouse lung by the cytokine interleukin 13

For Research Use Only