

## Recombinant Phospho-GSK3 $\alpha$ , $\beta$ (Tyr216, Tyr279) Monoclonal Antibody

catalog number: **AN300656L**

**Note:** Centrifuge before opening to ensure complete recovery of vial contents.

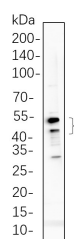
### Description

<b>Reactivity</b>	Human;Mouse;Rat
<b>Immunogen</b>	A synthetic peptide corresponding to residues around (Tyr216, Tyr279) of Human Phospho-GSK3 $\alpha$ , $\beta$
<b>Host</b>	Rabbit
<b>Isotype</b>	IgG, $\kappa$
<b>Clone</b>	1F8
<b>Purification</b>	Protein A
<b>Buffer</b>	PBS, 50% glycerol, 0.05% Proclin 300, 0.05% protein protectant.

### Applications Recommended Dilution

<b>WB</b>	1:2000-1:10000
-----------	----------------

### Data



Western Blot with Recombinant Phospho-GSK3  $\alpha$ ,  $\beta$  (Tyr216, Tyr279) Monoclonal Antibody at dilution of 1:1000 dilution. Lane A: C6 cell lysate.

**Observed-MW:47 kDa,51 kDa**

**Calculated-MW:47 kDa,51 kDa**

### Preparation & Storage

<b>Storage</b>	Store at -20°C Valid for 12 months. Avoid freeze / thaw cycles.
<b>Shipping</b>	Ice bag

### Background

GSK3A(glycogen synthase kinase 3 alpha) Homo sapiens This gene encodes a multifunctional Ser/Thr protein kinase that is implicated inThe control of several regulatory proteins including glycogen synthase, and transcription factors, such as JUN. It also plays a role inThe WNT and PI3K signaling pathways, as well as regulatesThe production of beta-amyloid peptides associated with Alzheimer's disease.

### For Research Use Only

Toll-free: 1-888-852-8623  
Web: [www.elabscience.com](http://www.elabscience.com)

Tel: 1-832-243-6086  
Email: [techsupport@elabscience.com](mailto:techsupport@elabscience.com)

Fax: 1-832-243-6017

Rev. V1.0