

Recombinant Human UBE2A Protein (GST & His Tag)

Catalog Number: PKSH033322

Note: Centrifuge before opening to ensure complete recovery of vial contents.

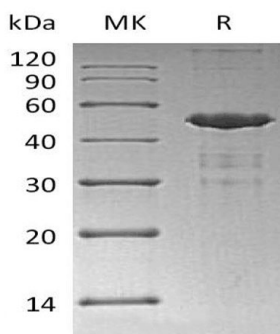
Description

Species	Human
Source	E.coli-derived Human UBE2A protein Met 1-Cys 152, with an N-terminal GST & His
Calculated MW	49.0 kDa
Observed MW	45 kDa
Accession	P49459
Bio-activity	Not validated for activity

Properties

Purity	> 80 % as determined by reducing SDS-PAGE.
Concentration	Subject to label value.
Endotoxin	< 1.0 EU per µg of the protein as determined by the LAL method.
Storage	Store at < -20°C, stable for 6 months. Please minimize freeze-thaw cycles.
Shipping	This product is provided as liquid. It is shipped at frozen temperature with blue ice/ gel packs. Upon receipt, store it immediately at < - 20°C.
Formulation	Supplied as a 0.2 µm filtered solution of 50mM HEPES, 150mM NaCl, 2mM DTT, 10% Glycerol, pH 7.5.

Data



> 80 % as determined by reducing SDS-PAGE.

Background

Ubiquitin-Conjugating Enzyme E2 (UBE2A) is a member of the E2 Ubiquitin-Conjugating Enzyme family. The modification of proteins with ubiquitin is an important cellular mechanism for targeting abnormal or short-lived proteins for degradation. Ubiquitination involves at least three classes of enzymes: ubiquitin-activating enzymes; or E1s; ubiquitin-conjugating enzymes; or E2s; and ubiquitin-protein ligases; or E3s. UBE2A catalyzes the covalent attachment of ubiquitin to other proteins. UBE2A is required for postreplication repair of UV-damaged DNA. UBE2A Interacts with RAD18 and WAC.

For Research Use Only

Toll-free: 1-888-852-8623
Web: www.elabscience.com

Tel: 1-832-243-6086
Email: techsupport@elabscience.com

Fax: 1-832-243-6017