

# Recombinant Rat CCL2/JE/MCP-1 Protein(Trx Tag)

Catalog Number: PDER100141



**Note:** Centrifuge before opening to ensure complete recovery of vial contents.

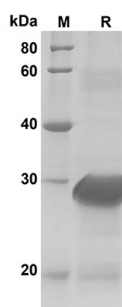
## Description

<b>Species</b>	Rat
<b>Source</b>	E.coli-derived Rat CCL2/JE/MCP-1 protein Gln24-Asn148, with an N-terminal Trx
<b>Mol_Mass</b>	33.64 kDa
<b>Accession</b>	P14844
<b>Bio-activity</b>	Not validated for activity

## Properties

<b>Purity</b>	> 90% as determined by reducing SDS-PAGE.
<b>Endotoxin</b>	< 10 EU/mg of the protein as determined by the LAL method
<b>Storage</b>	Generally, lyophilized proteins are stable for up to 12 months when stored at -20 to -80 °C. Reconstituted protein solution can be stored at 4-8°C for 2-7 days. Aliquots of reconstituted samples are stable at < -20°C for 3 months.
<b>Shipping</b>	This product is provided as lyophilized powder which is shipped with ice packs.
<b>Formulation</b>	Lyophilized from a 0.2 µm filtered solution in PBS with 5% Trehalose and 5% Mannitol.
<b>Reconstitution</b>	It is recommended that sterile water be added to the vial to prepare a stock solution of 0.5 mg/mL. Concentration is measured by UV-Vis.

## Data



SDS-PAGE analysis of Rat CCL2/JE/MCP-1 proteins, 2µg/lane of ReCombinant Rat CCL2/JE/MCP-1 proteins was resolved with SDS-PAGE under reducing conditions, showing bands at 30 KD

## Background

Monocyte chemoattractant protein 1 (CCL2/JE/MCP-1), also called CCL2, belongs to a group of CC chemokines located in chromosome 17q11.2. CCL2/JE/MCP-1 protein interacts with chemokine C-C motif receptor 2 (CCR2) to activate and recruit monocytes, macrophages, CD4+ T cells and immature dendritic cells to the site of infection. The presence of CCL2/JE/MCP-1 protein in an adequate concentration is important for granuloma formation and M. tuberculosis clearance.

## For Research Use Only

A Reliable Research Partner in Life Science and Medicine  
Tel:400-999-2100

Email:[techsupport@elabscience.cn](mailto:techsupport@elabscience.cn)

Web:[www.elabscience.cn](http://www.elabscience.cn)

Rev. V1.6