

## IFT27 Polyclonal Antibody

catalog number: E-AB-52838

**Note:** Centrifuge before opening to ensure complete recovery of vial contents.

### Description

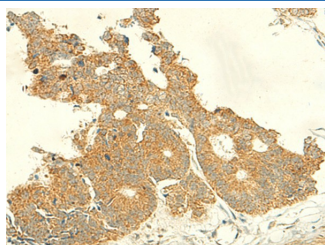
<b>Reactivity</b>	Human;Mouse
<b>Immunogen</b>	Fusion protein of human IFT27
<b>Host</b>	Rabbit
<b>Isotype</b>	IgG
<b>Purification</b>	Antigen affinity purification
<b>Conjugation</b>	Unconjugated
<b>Buffer</b>	Phosphate buffered solution, pH 7.4, containing 0.05% stabilizer and 50% glycerol.

### Applications

### Recommended Dilution

<b>IHC</b>	1:50-1:300
------------	------------

### Data



Immunohistochemistry of paraffin-embedded Human colorectal cancer tissue using IFT27 Polyclonal Antibody at dilution of 1:50(×200)

### Preparation & Storage

<b>Storage</b>	Store at -20°C Valid for 12 months. Avoid freeze / thaw cycles.
<b>Shipping</b>	The product is shipped with ice pack, upon receipt, store it immediately at the temperature recommended.

### Background

This gene encodes a GTP-binding protein that is a core component of the intraflagellar transport complex B. Characterization of the similar Chlamydomonas protein indicates a function in cell cycle control. Alternative splicing of this gene results in multiple transcript variants.