

# Recombinant Human IL10 Protein(His Tag)

Catalog Number: PDMH100204



**Note:** Centrifuge before opening to ensure complete recovery of vial contents.

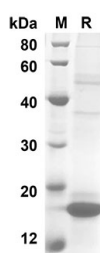
## Description

<b>Species</b>	Human
<b>Source</b>	Mammalian-derived Human IL-10 proteins Met1-Asn178, with an C-terminal His
<b>Mol_Mass</b>	19.5 kDa
<b>Accession</b>	P22301
<b>Bio-activity</b>	Not validated for activity

## Properties

<b>Purity</b>	> 90% as determined by reducing SDS-PAGE.
<b>Endotoxin</b>	< 1.0 EU/mg of the protein as determined by the LAL method
<b>Storage</b>	Generally, lyophilized proteins are stable for up to 12 months when stored at -20 to -80 °C. Reconstituted protein solution can be stored at 4-8°C for 2-7 days. Aliquots of reconstituted samples are stable at < -20°C for 3 months.
<b>Shipping</b>	This product is provided as lyophilized powder which is shipped with ice packs.
<b>Formulation</b>	Lyophilized from a 0.2 µm filtered solution in PBS with 5% Trehalose and 5% Mannitol.
<b>Reconstitution</b>	It is recommended that sterile water be added to the vial to prepare a stock solution of 0.5 mg/mL. Concentration is measured by UV-Vis.

## Data



SDS-PAGE analysis of Human IL-10 proteins, 2 µg/lane of Recombinant Human IL-10 proteins was resolved with SDS-PAGE under reducing conditions, showing bands at 19.5 KD

## Background

Interleukin (IL)-10 is an anti-inflammatory cytokine, produced by T helper (Th) cells, macrophages, monocytes, and B cells, that plays a crucial role in preventing inflammatory and autoimmune pathologies. It downregulates the expression of Th1 cytokines, MHC class II antigens, and co-stimulatory molecules on macrophages. It also enhances B cell survival, proliferation, and antibody production. IL-10 can block NF-κB activity, and is involved in the regulation of the JAK-STAT signaling pathway. IL-10, along with its receptors, describes an important role in pathogenesis of various diseases, including infectious, inflammatory, autoimmune diseases. IL-10 mutations are associated with an increased susceptibility to HIV-1 infection and rheumatoid arthritis.

## For Research Use Only

A Reliable Research Partner in Life Science and Medicine  
Tel:400-999-2100

Email:[techsupport@elabscience.cn](mailto:techsupport@elabscience.cn)

Web:[www.elabscience.cn](http://www.elabscience.cn)

Rev. V1.5