

RALY Polyclonal Antibody

catalog number: **E-AB-90308**

Note: Centrifuge before opening to ensure complete recovery of vial contents.

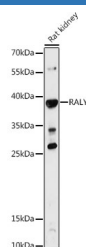
Description

Reactivity	Human;Mouse;Rat
Immunogen	Recombinant fusion protein of human RALY
Host	Rabbit
Isotype	IgG
Purification	Affinity purification
Buffer	Phosphate buffered solution, pH 7.4, containing 0.05% stabilizer and 50% glycerol.

Applications

WB	1:500-1:2000
-----------	--------------

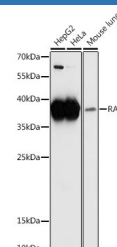
Data



Western blot analysis of extracts of Rat kidney using RALY Polyclonal Antibody at 1:1000 dilution.

Observed-MV:38 kDa

Calculated-MV:30 kDa/32 kDa



Western blot analysis of extracts of various cell lines using RALY Polyclonal Antibody at 1:1000 dilution.

Observed-MV:38 kDa

Calculated-MV:30 kDa/32 kDa

Preparation & Storage

Storage	Store at -20°C Valid for 12 months. Avoid freeze / thaw cycles.
Shipping	The product is shipped with ice pack, upon receipt, store it immediately at the temperature recommended.

Background

This gene encodes a member of the heterogeneous nuclear ribonucleoprotein (hnRNP) gene family. This protein may play a role in pre-mRNA splicing and in embryonic development. Alternate splicing results in multiple transcript variants.

For Research Use Only