

## Recombinant Human FANCA/FACA Protein (His Tag)

**Catalog Number:** PKSH030946

**Note:** Centrifuge before opening to ensure complete recovery of vial contents.

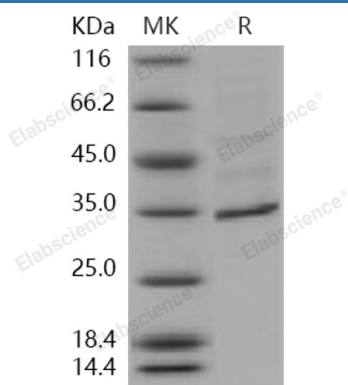
### Description

<b>Species</b>	Human
<b>Source</b>	Baculovirus-Insect Cells-derived Human FANCA/FACA protein Met 1-Cys 297, with an N-terminal His
<b>Calculated MW</b>	35.2 kDa
<b>Observed MW</b>	35 kDa
<b>Accession</b>	AAH08979.1
<b>Bio-activity</b>	Not validated for activity

### Properties

<b>Purity</b>	> 85 % as determined by reducing SDS-PAGE.
<b>Endotoxin</b>	< 1.0 EU per µg of the protein as determined by the LAL method.
<b>Storage</b>	Generally, lyophilized proteins are stable for up to 12 months when stored at -20 to -80 °C. Reconstituted protein solution can be stored at 4-8°C for 2-7 days. Aliquots of reconstituted samples are stable at < -20°C for 3 months.
<b>Shipping</b>	This product is provided as lyophilized powder which is shipped with ice packs.
<b>Formulation</b>	Lyophilized from sterile 20mM Tris, 200mM NaCl, pH 8.5, 20% glycerol, 0.1% Triton, 1mM TCEP Normally 5% - 8% trehalose, mannitol and 0.01% Tween 80 are added as protectants before lyophilization. Please refer to the specific buffer information in the printed manual.
<b>Reconstitution</b>	Please refer to the printed manual for detailed information.

### Data



> 85 % as determined by reducing SDS-PAGE.

### Background

FANCA is one of the six known Fanconi anemia gene products (FANCA, FANCC, FANCD2, FANCE, FANCF, and FANCG proteins). Fanconi anemia (FA) is a genetic disorder predisposing to aplastic anemia and cancer characterized by hypersensitivity to DNA-damaging agents and oxidative stress. FANCA associates with the IκB kinase (IKK) signalsome via interaction with IKK2. Components of the FANCA complex undergo rapid, stimulus-dependent changes in phosphorylation, which are blocked by kinase-inactive IKK2.

### For Research Use Only

Toll-free: 1-888-852-8623  
Web: [www.elabscience.com](http://www.elabscience.com)

Tel: 1-832-243-6086  
Email: [techsupport@elabscience.com](mailto:techsupport@elabscience.com)

Fax: 1-832-243-6017