

## CXCR7 Polyclonal Antibody

catalog number: E-AB-70115

**Note:** Centrifuge before opening to ensure complete recovery of vial contents.

### Description

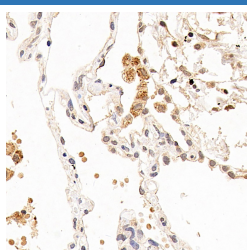
<b>Reactivity</b>	Human;Mouse;Rat
<b>Immunogen</b>	KLH conjugated Synthetic peptide corresponding to Mouse CXCR7
<b>Host</b>	Rabbit
<b>Isotype</b>	IgG
<b>Purification</b>	Affinity purification
<b>Conjugation</b>	Unconjugated
<b>Buffer</b>	Phosphate buffered solution, pH 7.4, containing 0.05% stabilizer, 1% protein protectant and 50% glycerol.

### Applications

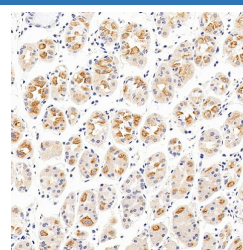
### Recommended Dilution

<b>IHC</b>	1:100-1:200
------------	-------------

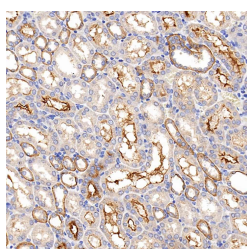
### Data



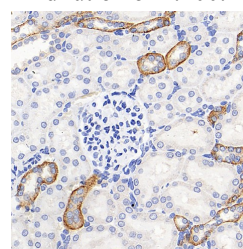
Immunohistochemistry analysis of paraffin-embedded human lung using CXCR7 Polyclonal Antibody at dilution of 1:100.



Immunohistochemistry analysis of paraffin-embedded human stomach using CXCR7 Polyclonal Antibody at dilution of 1:100.



Immunohistochemistry analysis of paraffin-embedded mouse kidney using CXCR7 Polyclonal Antibody at dilution of 1:200.



Immunohistochemistry analysis of paraffin-embedded rat kidney using CXCR7 Polyclonal Antibody at dilution of 1:200.

### Preparation & Storage

<b>Storage</b>	Store at -20°C Valid for 12 months. Avoid freeze / thaw cycles.
<b>Shipping</b>	The product is shipped with ice pack, upon receipt, store it immediately at the temperature recommended.

### Background

CXCR7 (C-X-C chemokine receptor type 7), also known as RDC1, is a member of the G-protein coupled receptor family. CXCR7 can bind the chemokines CXCL11 and CXCL12 with high affinity, and it also acts as coreceptor with CXCR4 for a restricted number of HIV isolates. Expression of CXCR7 has been associated with cardiac development as well as with tumor growth and progression.

### For Research Use Only