

RAB11A Polyclonal Antibody

catalog number: E-AB-52335

Note: Centrifuge before opening to ensure complete recovery of vial contents.

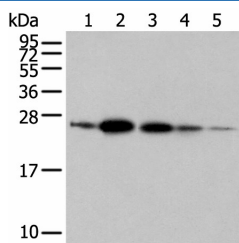
Description

Reactivity	Human;Mouse;Rat
Immunogen	Full length fusion protein
Host	Rabbit
Isotype	IgG
Purification	Antigen affinity purification
Buffer	Phosphate buffered solution, pH 7.4, containing 0.05% stabilizer and 50% glycerol.

Applications

Applications	Recommended Dilution
WB	1:500-1:2000
IHC	1:30-1:150

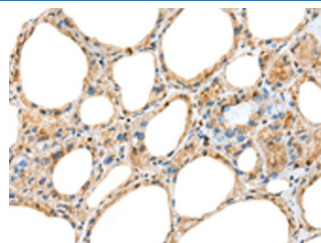
Data



Western blot analysis of 293T, A549, and 231 cell lines, as well as human fetal brain and placenta tissues using RAB11A Polyclonal Antibody at dilution of 1:500

Observed-MW: Refer to figures

Calculated-MW: 24 kDa



Immunohistochemistry of paraffin-embedded human thyroid cancer tissue using RAB11A Polyclonal Antibody at dilution of 1:45 (×200)

Preparation & Storage

Storage	Store at -20°C. Valid for 12 months. Avoid freeze / thaw cycles.
Shipping	The product is shipped with ice pack; upon receipt, store it immediately at the temperature recommended.

Background

The protein encoded by this gene belongs to the Rab family of the small GTPase superfamily. It is associated with both constitutive and regulated secretory pathways, and may be involved in protein transport. Two transcript variants encoding different isoforms have been found for this gene.

For Research Use Only