

## ILF3 Polyclonal Antibody

catalog number: **E-AB-60693**

**Note:** Centrifuge before opening to ensure complete recovery of vial contents.

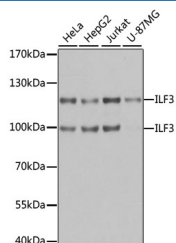
### Description

<b>Reactivity</b>	Human;Mouse;Rat
<b>Immunogen</b>	Recombinant fusion protein of human ILF3 (NP_036350.2).
<b>Host</b>	Rabbit
<b>Isotype</b>	IgG
<b>Purification</b>	Affinity purification
<b>Buffer</b>	Phosphate buffered solution, pH 7.4, containing 0.05% stabilizer and 50% glycerol.

### Applications

<b>WB</b>	1:500-1:2000
<b>IF</b>	1:50-1:200

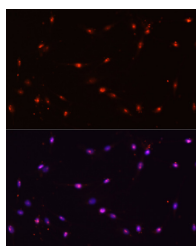
### Data



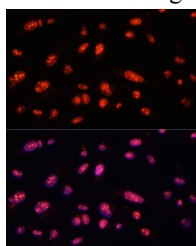
Western blot analysis of extracts of various cell lines using ILF3 Polyclonal Antibody at dilution of 1:1000.

**Observed-MW:95 kDa/120 kDa**

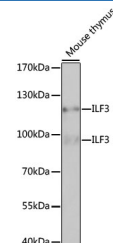
**Calculated-MW:74 kDa/75 kDa/76 kDa/82 kDa/95 kDa**



Immunofluorescence analysis of C6 cells using ILF3 Polyclonal Antibody at dilution of 1:100. Blue: DAPI for nuclear staining.



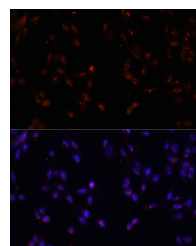
Immunofluorescence analysis of U-2 OS cells using ILF3 Polyclonal Antibody at dilution of 1:100. Blue: DAPI for nuclear staining.



Western blot analysis of extracts of Mouse thymus using ILF3 Polyclonal Antibody at dilution of 1:1000.

**Observed-MW:95 kDa/120 kDa**

**Calculated-MW:74 kDa/75 kDa/76 kDa/82 kDa/95 kDa**



Immunofluorescence analysis of NIH-3T3 cells using ILF3 Polyclonal Antibody at dilution of 1:100. Blue: DAPI for nuclear staining.

### For Research Use Only

## Preparation & Storage

**Storage**

Store at -20°C Valid for 12 months. Avoid freeze / thaw cycles.

**Shipping**

The product is shipped with ice pack, upon receipt, store it immediately at the temperature recommended.

## Background

This gene encodes a double-stranded RNA (dsRNA) binding protein that complexes with other proteins, dsRNAs, small noncoding RNAs, and mRNAs to regulate gene expression and stabilize mRNAs. This protein (NF90, ILF3) forms a heterodimer with a 45 kDa transcription factor (NF45, ILF2) required for T-cell expression of interleukin 2. This complex has been shown to affect the redistribution of nuclear mRNA to the cytoplasm. Knockdown of NF45 or NF90 protein retards cell growth, possibly by inhibition of mRNA stabilization. In contrast, an isoform (NF110) of this gene that is predominantly restricted to the nucleus has only minor effects on cell growth when its levels are reduced. Alternative splicing results in multiple transcript variants encoding distinct isoforms.

## For Research Use Only