

Recombinant Rat CRH Protein (His Tag)

Catalog Number: PDER100190

Note: Centrifuge before opening to ensure complete recovery of vial contents.

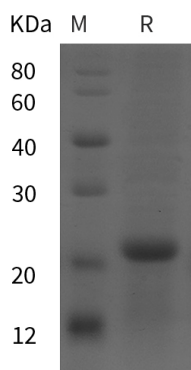
Description

Species	Rat
Source	E.coli-derived Rat CRH protein Gln39-Lys187, with an N-terminal His
Calculated MW	16.3 kDa
Observed MW	21 kDa
Accession	P01143
Bio-activity	Not validated for activity

Properties

Purity	> 95% as determined by reducing SDS-PAGE.
Endotoxin	< 10 EU/mg of the protein as determined by the LAL method
Storage	Generally, lyophilized proteins are stable for up to 12 months when stored at -20 to -80°C. Reconstituted protein solution can be stored at 4-8°C for 2-7 days. Aliquots of reconstituted samples are stable at < -20°C for 3 months.
Shipping	This product is provided as lyophilized powder which is shipped with ice packs.
Formulation	Lyophilized from a 0.2 µm filtered solution in PBS with 5% Trehalose and 5% Mannitol.
Reconstitution	It is recommended that sterile water be added to the vial to prepare a stock solution of 0.5 mg/mL. Concentration is measured by UV-Vis.

Data



SDS-PAGE analysis of Rat CRH proteins, 2 µg/lane of Recombinant Rat CRH proteins was resolved with SDS-PAGE under reducing conditions, showing bands at 21 kDa.

Background

Hormone regulating the release of corticotropin from pituitary gland. Induces NLRP6 in intestinal epithelial cells, hence may influence gut microbiota profile.

For Research Use Only

Toll-free: 1-888-852-8623
Web: www.elabscience.com

Tel: 1-832-243-6086
Email: techsupport@elabscience.com

Fax: 1-832-243-6017