

RMI1 Polyclonal Antibody

catalog number: **E-AB-92626**

Note: Centrifuge before opening to ensure complete recovery of vial contents.

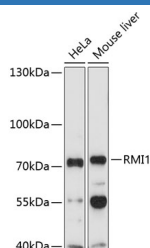
Description

Reactivity	Human;Mouse
Immunogen	Recombinant fusion protein of human RMI1
Host	Rabbit
Isotype	IgG
Purification	Affinity purification
Buffer	Phosphate buffered solution, pH 7.4, containing 0.05% stabilizer and 50% glycerol.

Applications Recommended Dilution

WB	1:200-1:2000
-----------	--------------

Data



Western blot analysis of extracts of various cell lines using RMI1 Polyclonal Antibody at 1:1000 dilution.

Observed-MW:75 kDa

Calculated-MW:70 kDa

Preparation & Storage

Storage	Store at -20°C Valid for 12 months. Avoid freeze / thaw cycles.
Shipping	The product is shipped with ice pack, upon receipt, store it immediately at the temperature recommended.

Background

RMI1 is a component of protein complexes that limit DNA crossover formation via the dissolution of double Holliday junctions (Raynard et al., 2006 [PubMed 16595695]).[supplied by OMIM, Mar 2008]

For Research Use Only