

COL1A1 Polyclonal Antibody

catalog number: E-AB-70008

Note: Centrifuge before opening to ensure complete recovery of vial contents.

Description

Reactivity	Human;Mouse;Rat
Immunogen	KLH conjugated Synthetic peptide corresponding to Mouse COL1A1
Host	Rabbit
Isotype	IgG
Purification	Affinity purification
Buffer	Phosphate buffered solution, pH 7.4, containing 0.05% stabilizer, 1% protein protectant and 50% glycerol.

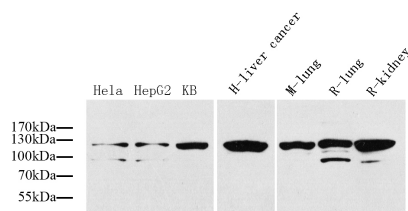
Applications

WB

Recommended Dilution

1:500-1:2000

Data



Western Blot analysis of various samples using COL1A1

Polyclonal Antibody at dilution of 1:1000.

Observed-MW: 110-130 kDa

Calculated-MW: 139 kDa

Preparation & Storage

Storage	Store at -20°C Valid for 12 months. Avoid freeze / thaw cycles.
Shipping	The product is shipped with ice pack, upon receipt, store it immediately at the temperature recommended.

Background

COL1A1 (Collagen Type I Alpha 1 Chain) is a Protein Coding gene. Diseases associated with COL1A1 include Caffey Disease and Osteogenesis Imperfecta, Type I. Among its related pathways are Collagen chain trimerization and Transcription_Role of VDR in regulation of genes involved in osteoporosis. GO annotations related to this gene include identical protein binding and platelet-derived growth factor binding. An important paralog of this gene is COL2A1. This gene encodes the pro-alpha1 chains of type I collagen whose triple helix comprises two alpha1 chains and one alpha2 chain. Type I is a fibril-forming collagen found in most connective tissues and is abundant in bone, cornea, dermis and tendon. Mutations in this gene are associated with osteogenesis imperfecta types I-IV, Ehlers-Danlos syndrome type VIIA, Ehlers-Danlos syndrome Classical type, Caffey Disease and idiopathic osteoporosis. Reciprocal translocations between chromosomes 17 and 22, where this gene and the gene for platelet-derived growth factor beta are located, are associated with a particular type of skin tumor called dermatofibrosarcoma protuberans, resulting from unregulated expression of the growth factor. Two transcripts, resulting from the use of alternate polyadenylation signals, have been identified for this gene.

For Research Use Only