

Recombinant Human SULT1C2 Protein (His Tag)

Catalog Number: PKSH033086

Note: Centrifuge before opening to ensure complete recovery of vial contents.

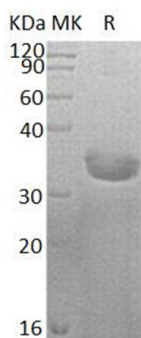
Description

Species	Human
Source	E.coli-derived Human SULT1C2 protein Met 1-Leu296, with an N-terminal His
Mol_Mass	36.3 kDa
Accession	O00338
Bio-activity	Not validated for activity

Properties

Purity	> 95 % as determined by reducing SDS-PAGE.
Endotoxin	< 1.0 EU per µg of the protein as determined by the LAL method.
Storage	Store at < -20°C, stable for 6 months. Please minimize freeze-thaw cycles.
Shipping	This product is provided as liquid. It is shipped at frozen temperature with blue ice/gel packs. Upon receipt, store it immediately at < -20°C.
Formulation	Supplied as a 0.2 µm filtered solution of 20mM Tris-HCl, 100mM NaCl, pH 8.5.
Reconstitution	Not Applicable

Data



> 95 % as determined by reducing SDS-PAGE.

Background

Sulfotransferase 1C2 (SULT1C2) is a cytosolic enzyme member of the Sulfotransferase 1 family. Human SULT1C2 is primarily expressed in the adult stomach, kidney and thyroid gland, and in the fetal kidney and liver. SULT1C2 catalyzes the sulfate conjugation of drugs, xenobiotic compounds, hormones, and neurotransmitters. SULT1C2 may be involved in the activation of carcinogenic hydroxylamines. It shows activity towards p-nitrophenol and N-hydroxy-2-acetylaminofluorene (N-OH-2AAF).