

REG3G Polyclonal Antibody

catalog number: E-AB-60637

Note: Centrifuge before opening to ensure complete recovery of vial contents.

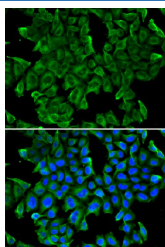
Description

Reactivity	Human;Mouse;Rat
Immunogen	Recombinant protein of mouse REG3G
Host	Rabbit
Isotype	IgG
Purification	Affinity purification
Buffer	Phosphate buffered solution, pH 7.4, containing 0.05% stabilizer and 50% glycerol.

Applications

Applications	Recommended Dilution
IF	1:10-1:100

Data



Immunofluorescence analysis of MCF-7 cells using REG3G
Polyclonal Antibody

Preparation & Storage

Storage	Store at -20°C Valid for 12 months. Avoid freeze / thaw cycles.
Shipping	The product is shipped with ice pack, upon receipt, store it immediately at the temperature recommended.

Background

This gene encodes a member of the regenerating islet-derived genes (REG)3 protein family. These proteins are secreted, C-type lectins with a carbohydrate recognition domain and N-terminal signal peptide. The protein encoded by this gene is an antimicrobial lectin with activity against Gram-positive bacteria. Alternative splicing results in multiple transcript variants encoding multiple isoforms.

For Research Use Only