

Recombinant Histone H1 (CT) Monoclonal Antibody

catalog number: **AN301548L**

Note: Centrifuge before opening to ensure complete recovery of vial contents.

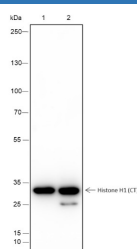
Description

Reactivity	Human;
Immunogen	Synthetic peptide corresponding to the C-terminus of human histone H1.4 protein
Host	Rabbit
Isotype	IgG, κ
Clone	A247
Purification	Protein A purified
Buffer	PBS, 50% glycerol, 0.05% Proclin 300, 0.05% protein protectant.

Applications Recommended Dilution

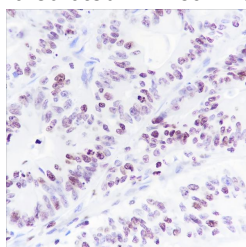
WB	1:500-1:1000
IHC	1:50-1:200
IF	1:50
FCM	1:50-1:100

Data

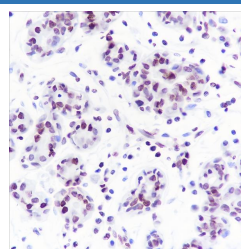


Western Blot with Histone H1 Monoclonal Antibody at dilution of 1:1000. Lane 1: HeLa, Lane 2: MCF-7

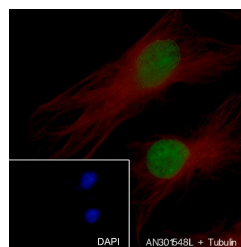
Observed-MW:30 kDa
Calculated-MW:30 kDa



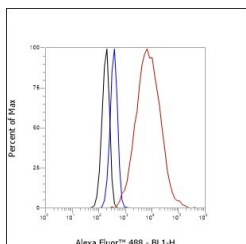
Immunohistochemistry of paraffin-embedded Human colon cancer using Histone H1 Monoclonal Antibody at dilution of 1:200.



Immunohistochemistry of paraffin-embedded Human breast using Histone H1 Monoclonal Antibody at dilution of 1:200.



Immunofluorescent analysis of (4% Paraformaldehyde) fixed HeLa cells using anti-Histone H1 Monoclonal Antibody at dilution of 1:50.



For Research Use Only

Toll-free: 1-888-852-8623
Web: www.elabscience.com

Tel: 1-832-243-6086
Email: techsupport@elabscience.com

Fax: 1-832-243-6017

Rev. V1.0

Flow cytometric analysis of human Histone H1 expression on HeLa cells. Cells were stained with purified anti-Human Histone H1, then a Alexa Fluor 488-conjugated second step antibody. The histogram were derived from events with the forward and side light-scatter characteristics of intact cells.

Preparation & Storage

Storage	Store at -20°C Valid for 12 months. Avoid freeze / thaw cycles.
Shipping	Ice bag

Background

Histone H1 protein binds to linker DNA between nucleosomes forming the macromolecular structure known as the chromatin fiber. Histones H1 are necessary for the condensation of nucleosome chains into higher-order structured fibers. Acts also as a regulator of individual gene transcription through chromatin remodeling, nucleosome spacing and DNA methylation.

For Research Use Only

Toll-free: 1-888-852-8623
Web: www.elabscience.com

Tel: 1-832-243-6086
Email: techsupport@elabscience.com

Fax: 1-832-243-6017

Rev. V1.0