

SLC5A6 Polyclonal Antibody

catalog number: E-AB-66355

Note: Centrifuge before opening to ensure complete recovery of vial contents.

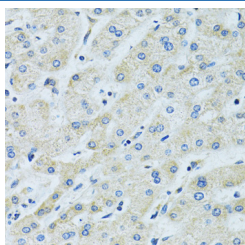
Description

Reactivity	Human;Mouse;Rat
Immunogen	A synthetic peptide of human SLC5A6 (NP_066918.2).
Host	Rabbit
Isotype	IgG
Purification	Affinity purification
Buffer	Phosphate buffered solution, pH 7.4, containing 0.05% stabilizer and 50% glycerol.

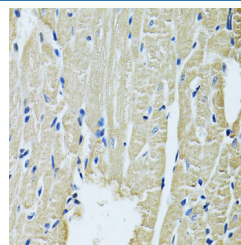
Applications Recommended Dilution

IHC	1:50-1:200
------------	------------

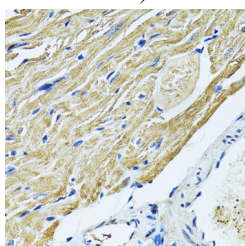
Data



Immunohistochemistry of paraffin-embedded Human liver using SLC5A6 Polyclonal Antibody at dilution of 1:100 (40x lens).



Immunohistochemistry of paraffin-embedded Rat heart using SLC5A6 Polyclonal Antibody at dilution of 1:100 (40x lens).



Immunohistochemistry of paraffin-embedded Mouse heart using SLC5A6 Polyclonal Antibody at dilution of 1:100 (40x lens).

Preparation & Storage

Storage	Store at -20°C Valid for 12 months. Avoid freeze / thaw cycles.
Shipping	The product is shipped with ice pack, upon receipt, store it immediately at the temperature recommended.

Background

SLC5A6 (Solute Carrier Family 5 Member 6) is a Protein Coding gene. Diseases associated with SLC5A6 include Biotin Deficiency and Retinitis Pigmentosa 50. Among its related pathways are Metabolism of water-soluble vitamins and cofactors and NRF2 pathway. Gene Ontology (GO) annotations related to this gene include transporter activity and sodium-dependent multivitamin transmembrane transporter activity. An important paralog of this gene is SLC5A8.

For Research Use Only