

Recombinant Human GAPDH Protein (His Tag)

Catalog Number: PKSH031882

Note: *Centrifuge before opening to ensure complete recovery of vial contents.*

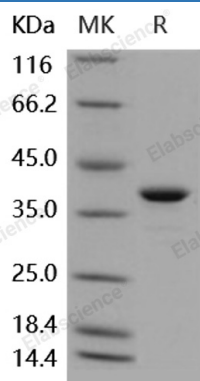
Description

Species	Human
Source	E.coli-derived Human GAPDH protein Met 1-Glu 335, with an N-terminal His
Calculated MW	38 kDa
Observed MW	38 kDa
Accession	P04406
Bio-activity	Not validated for activity

Properties

Purity	> 93 % as determined by reducing SDS-PAGE.
Endotoxin	Please contact us for more information.
Storage	Generally, lyophilized proteins are stable for up to 12 months when stored at -20 to -80°C. Reconstituted protein solution can be stored at 4-8°C for 2-7 days. Aliquots of reconstituted samples are stable at < -20°C for 3 months.
Shipping	This product is provided as lyophilized powder which is shipped with ice packs.
Formulation	Lyophilized from sterile 50mM Tris, 30% glycerol, pH 7.5 Normally 5% - 8% trehalose, mannitol and 0.01% Tween 80 are added as protectants before lyophilization. Please refer to the specific buffer information in the printed manual.
Reconstitution	Please refer to the printed manual for detailed information.

Data



> 93 % as determined by reducing SDS-PAGE.

Background

Glyceraldehyde 3-phosphate dehydrogenase (GAPDH or G3PDH) is an enzyme of about 37kDa that is considered as a cellular enzyme involved in glycolysis. It catalyzes the sixth step of glycolysis. Glyceraldehyde-3-phosphate dehydrogenase (GAPDH) is a pleiotropic enzyme that is overexpressed in apoptosis and in several human chronic pathologies. Its role as a mediator for cell death has also been highlighted. A recent report suggests that GAPDH may be genetically associated with late-onset of Alzheimer's disease. Besides, deprenyl, which has originally been used as a monoamine oxidase inhibitor for Parkinson's disease, binds to GAPDH and displays neuroprotective actions.

For Research Use Only

Toll-free: 1-888-852-8623
Web: www.elabscience.com

Tel: 1-832-243-6086
Email: techsupport@elabscience.com

Fax: 1-832-243-6017