

## Recombinant Human SEMA4B Protein (His Tag)

**Catalog Number:** PKSH033020

**Note:** Centrifuge before opening to ensure complete recovery of vial contents.

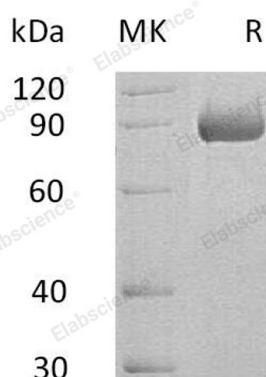
### Description

|                      |  |
|----------------------|--|
| <b>Species</b>       | Human  |
| <b>Source</b>        | HEK293 Cells-derived Human SEMA4B protein Leu39-Glu712, with an C-terminal His |
| <b>Calculated MW</b> | 75.7 kDa   |
| <b>Observed MW</b>   | 86 kDa   |
| <b>Accession</b>     | Q9NPR2   |
| <b>Bio-activity</b>  | Not validated for activity   |

### Properties

|                      |   |
|----------------------|---|
| <b>Purity</b>        | > 95 % as determined by reducing SDS-PAGE.  |
| <b>Concentration</b> | Subject to label value.   |
| <b>Endotoxin</b>     | < 1.0 EU per µg of the protein as determined by the LAL method.   |
| <b>Storage</b>       | Store at < -20°C, stable for 6 months. Please minimize freeze-thaw cycles.  |
| <b>Shipping</b>      | This product is provided as liquid. It is shipped at frozen temperature with blue ice/ gel packs. Upon receipt, store it immediately at < - 20°C. |
| <b>Formulation</b>   | Supplied as a 0.2 µm filtered solution of 20mM PB, 150mM NaCl, pH 7.4.  |

### Data



> 95 % as determined by reducing SDS-PAGE.

### Background

The class 4 semaphorins are integral membrane proteins that are widely expressed throughout the nervous system. SEMA4B is a single-pass type I membrane protein and contains one Ig-like C2-type (immunoglobulin-like) domain; one PSI domain and one Sema domain. Human SEMA4B is expressed in neurons. SEMA4B inhibits axonal extension by providing local signals to specify territories inaccessible for growing axons. SEMA4B negatively regulates basophil-mediated Th2 and humoral memory responses.

### For Research Use Only