

## SLC14A2 Polyclonal Antibody

catalog number: **E-AB-90608**

**Note:** Centrifuge before opening to ensure complete recovery of vial contents.

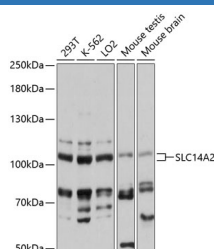
### Description

<b>Reactivity</b>	Human;Mouse
<b>Immunogen</b>	Recombinant fusion protein of human SLC14A2
<b>Host</b>	Rabbit
<b>Isotype</b>	IgG
<b>Purification</b>	Affinity purification
<b>Buffer</b>	Phosphate buffered solution, pH 7.4, containing 0.05% stabilizer and 50% glycerol.

### Applications Recommended Dilution

<b>WB</b>	1:500-1:2000
-----------	--------------

### Data



Western blot analysis of extracts of various cell lines using SLC14A2 Polyclonal Antibody at 1:3000 dilution.

**Observed-MV:101 kDa**

**Calculated-MV:43 kDa/101 kDa**

### Preparation & Storage

<b>Storage</b>	Store at -20°C Valid for 12 months. Avoid freeze / thaw cycles.
<b>Shipping</b>	The product is shipped with ice pack, upon receipt, store it immediately at the temperature recommended.

### Background

The protein encoded by this gene belongs to the urea transporter family. In mammalian cells, urea is the chief end product of nitrogen catabolism, and plays an important role in the urinary concentration mechanism. This protein is expressed in the inner medulla of the kidney, and mediates rapid transepithelial urea transport across the inner medullary collecting duct. Alternatively spliced transcript variants have been found for this gene.

### For Research Use Only