

## Recombinant Human Mucin-15/MUC15 Protein (His Tag)

**Catalog Number:** PKSH032766

**Note:** Centrifuge before opening to ensure complete recovery of vial contents.

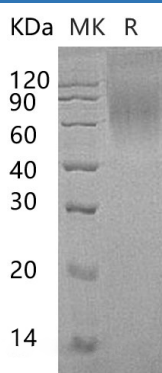
### Description

<b>Species</b>	Human
<b>Source</b>	HEK293 Cells-derived Human Mucin-15;MUC15 protein Lys24-Thr 236, with an C-terminal His
<b>Calculated MW</b>	24.1 kDa
<b>Observed MW</b>	74 kDa
<b>Accession</b>	AAH58007.1
<b>Bio-activity</b>	Not validated for activity

### Properties

<b>Purity</b>	> 90 % as determined by reducing SDS-PAGE.
<b>Endotoxin</b>	< 1.0 EU per µg of the protein as determined by the LAL method.
<b>Storage</b>	Generally, lyophilized proteins are stable for up to 12 months when stored at -20 to -80 °C. Reconstituted protein solution can be stored at 4-8°C for 2-7 days. Aliquots of reconstituted samples are stable at < -20°C for 3 months.
<b>Shipping</b>	This product is provided as lyophilized powder which is shipped with ice packs.
<b>Formulation</b>	Lyophilized from a 0.2 µm filtered solution of 20mM PB,150mM NaCl,pH7.4. Normally 5% - 8% trehalose, mannitol and 0.01% Tween 80 are added as protectants before lyophilization.
	Please refer to the specific buffer information in the printed manual.
<b>Reconstitution</b>	Please refer to the printed manual for detailed information.

### Data



> 90 % as determined by reducing SDS-PAGE.

### Background

Mucin-15 is a single-pass type I membrane protein member of the Mucin family. Mucins are a family of high molecular weight, heavily glycosylated proteins (glycoconjugates) produced by epithelial tissues in most metazoans. A key characteristic of Mucins is their ability to form gels. Therefore they are a key component in most gel-like secretions, serving functions from lubrication to cell signalling to forming chemical barriers. Mucin-15 is expressed in many tissues. Mucin-15 is highly glycosylated (N- and O-linked carbohydrates). Mucin-15 may play a role in the cell adhesion to the extracellular matrix.

### For Research Use Only