

Recombinant Human CELA3A Protein (His Tag)

Catalog Number: PKSH032252

Note: Centrifuge before opening to ensure complete recovery of vial contents.

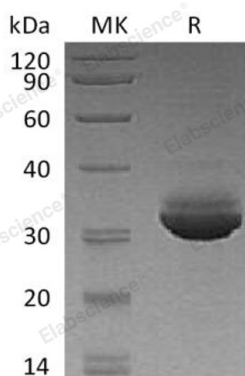
Description

Species	Human
Source	HEK293 Cells-derived Human CELA3A protein Ser16-His270, with an C-terminal His
Calculated MW	28.9 kDa
Observed MW	31 kDa
Accession	AAH07028.1
Bio-activity	Not validated for activity

Properties

Purity	> 95 % as determined by reducing SDS-PAGE.
Concentration	Subject to label value.
Endotoxin	< 1.0 EU per µg of the protein as determined by the LAL method.
Storage	Store at < -20°C, stable for 6 months. Please minimize freeze-thaw cycles.
Shipping	This product is provided as liquid. It is shipped at frozen temperature with blue ice/ gel packs. Upon receipt, store it immediately at < - 20°C.
Formulation	Supplied as a 0.2 µm filtered solution of 20mM Tris-HCl, 150mM NaCl, 10% Glycerol, pH 7.5.

Data



> 95 % as determined by reducing SDS-PAGE.

Background

Chymotrypsin-Like Elastase Family Member 3A (CELA3A) is an enzyme that contains one peptidase S1 domain. ELA3A belongs to the peptidase S1 family of the Elastase subfamily. ELA3A is secreted from the pancreas as a zymogen and, like other serine proteases such as trypsin, chymotrypsin and kallikrein, it has a digestive function in the intestine. ELA3A may also function in the intestinal transport and metabolism of cholesterol. ELA3A is efficient protease with alanine specificity but only little elastolytic activity. ELA3A preferentially cleaves proteins after alanine residues.

For Research Use Only

Toll-free: 1-888-852-8623
Web: www.elabscience.com

Tel: 1-832-243-6086
Email: techsupport@elabscience.com

Fax: 1-832-243-6017