

Recombinant HIV gp120 Protein (His Tag)

Catalog Number: **PKSQ050061**

Note: Centrifuge before opening to ensure complete recovery of vial contents.

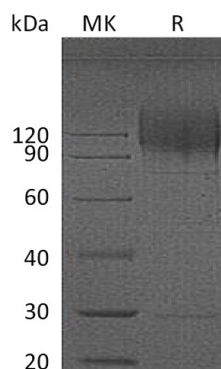
Description

Species	HIV
Source	HEK293 Cells-derived HIV gp120 protein Met1-Glu498, with an C-terminal His
Calculated MW	57.0 kDa
Observed MW	90-140 kDa
Accession	Q9DKG6
Bio-activity	Not validated for activity

Properties

Purity	> 95 % as determined by reducing SDS-PAGE.
Endotoxin	< 1.0 EU per µg of the protein as determined by the LAL method.
Storage	Generally, lyophilized proteins are stable for up to 12 months when stored at -20 to -80 °C. Reconstituted protein solution can be stored at 4-8°C for 2-7 days. Aliquots of reconstituted samples are stable at < -20°C for 3 months.
Shipping	This product is provided as lyophilized powder which is shipped with ice packs.
Formulation	Lyophilized from a 0.2 µm filtered solution of PBS, pH 7.4. Normally 5% - 8% trehalose, mannitol and 0.01% Tween 80 are added as protectants before lyophilization. Please refer to the specific buffer information in the printed manual.
Reconstitution	Please refer to the printed manual for detailed information.

Data



> 95 % as determined by reducing SDS-PAGE.

Background

Envelope glycoprotein gp160 is single-pass type I membrane protein. The mature envelope protein (Env) consists of a homotrimer of non-covalently associated gp120-gp41 heterodimers. It is cleaved into the following 2 chains: glycoprotein 120 and transmembrane protein gp41. The resulting complex protrudes from the virus surface as a spike. The 17 amino acids long immunosuppressive region is present in many retroviral envelope proteins. Synthetic peptides derived from this relatively conserved sequence inhibit immune function in vitro and in vivo.