

## Recombinant Human FGF-7/KGF Protein (His Tag)

**Catalog Number: PKSH032445**

**Note:** Centrifuge before opening to ensure complete recovery of vial contents.

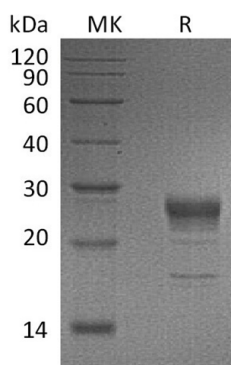
### Description

<b>Species</b>	Human
<b>Source</b>	HEK293 Cells-derived Human FGF-7;KGF protein Cys32-Thr194, with an C-terminal His
<b>Calculated MW</b>	20.0 kDa
<b>Observed MW</b>	20-27 kDa
<b>Accession</b>	P21781
<b>Bio-activity</b>	Measured in a cell proliferation assay using HaCaT cells. The ED <sub>50</sub> for this effect is 10.94 ng/ml.

### Properties

<b>Purity</b>	> 90 % as determined by reducing SDS-PAGE.
<b>Endotoxin</b>	< 1.0 EU per µg of the protein as determined by the LAL method.
<b>Storage</b>	Generally, lyophilized proteins are stable for up to 12 months when stored at -20 to -80 °C. Reconstituted protein solution can be stored at 4-8°C for 2-7 days. Aliquots of reconstituted samples are stable at < -20°C for 3 months.
<b>Shipping</b>	This product is provided as lyophilized powder which is shipped with ice packs.
<b>Formulation</b>	Lyophilized from a 0.2 µm filtered solution of PBS, pH 7.4. Normally 5% - 8% trehalose, mannitol and 0.01% Tween 80 are added as protectants before lyophilization.
	Please refer to the specific buffer information in the printed manual.
<b>Reconstitution</b>	Please refer to the printed manual for detailed information.

### Data



> 90 % as determined by reducing SDS-PAGE.

### Background

Fibroblast growth factor 7 (FGF7) is a secreted protein which is mainly located in epithelial cells and belongs to the heparin-binding growth factors family. FGF family members possess broad mitogenic and cell survival activities; and are involved in a variety of biological processes; including embryonic development; cell growth; morphogenesis; tissue repair; tumor growth and invasion. FGF7 is a potent epithelial cell-specific growth factor; whose mitogenic activity is predominantly exhibited in keratinocytes but not in fibroblasts and endothelial cells. It is possible major paracrine effector of normal epithelial cell proliferation.

### For Research Use Only