

p27 Polyclonal Antibody

catalog number: E-AB-70373

Note: Centrifuge before opening to ensure complete recovery of vial contents.

Description

Reactivity	Human
Immunogen	KLH conjugated Synthetic peptide corresponding to Human p27 KIP 1.
Host	Rabbit
Isotype	IgG
Purification	Affinity purification
Conjugation	Unconjugated
Buffer	Phosphate buffered solution, pH 7.4, containing 0.05% stabilizer, 1% protein protectant and 50% glycerol.

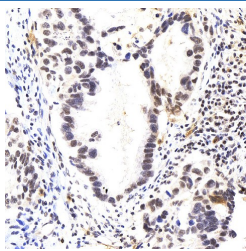
Applications

Recommended Dilution

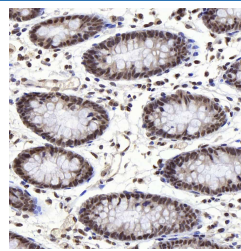
IHC

1:300-1:1000

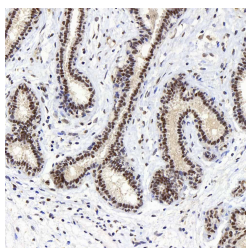
Data



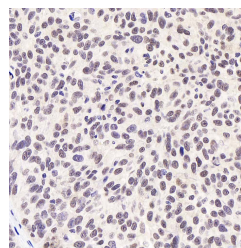
Immunohistochemistry analysis of paraffin-embedded human lung cancer using p27 Polyclonal Antibody at dilution of 1:400.



Immunohistochemistry analysis of paraffin-embedded human colon using p27 Polyclonal Antibody at dilution of 1:400.



Immunohistochemistry analysis of paraffin-embedded human breast using p27 Polyclonal Antibody at dilution of 1:400.



Immunohistochemistry analysis of paraffin-embedded human esophagi cancer using p27 Polyclonal Antibody at dilution of 1:400.

Preparation & Storage

Storage

Store at -20°C Valid for 12 months. Avoid freeze / thaw cycles.

Shipping

The product is shipped with ice pack, upon receipt, store it immediately at the temperature recommended.

Background

For Research Use Only

Tel: 400-999-2100

Web: www.elabscience.cn

Email: techsupport@elabscience.cn

Rev. V1.8

This gene encodes a cyclin-dependent kinase inhibitor, which shares a limited similarity with CDK inhibitor CDKN1A/p21. The encoded protein binds to and prevents the activation of cyclin E-CDK2 or cyclin D-CDK4 complexes, and thus controls the cell cycle progression at G1. The degradation of this protein, which is triggered by its CDK dependent phosphorylation and subsequent ubiquitination by SCF complexes, is required for the cellular transition from quiescence to the proliferative state. Mutations in this gene are associated with multiple endocrine neoplasia type IV (MEN4).