

Elab Fluor® 647 Anti-Human CD185 Antibody[MU5UBEE]

Catalog Number: E-AB-F1416M

Note: Centrifuge before opening to ensure complete recovery of vial contents.

Description

Reactivity	Human
Host	Mouse
Isotype	Mouse IgG2b, κ
Clone No.	MU5UBEE
Isotype Control	Elab Fluor® 647 Mouse IgG2b, κ Isotype Control[MPC-11] [Product E-AB-F09812M]
Conjugation	Elab Fluor® 647
Conjugation Information	Elab Fluor® 647 is designed to be excited by the Red laser (627-640 nm) and detected using an optical filter centered near 670 nm (e.g., a 660/20 nm bandpass filter).
Storage Buffer	Phosphate buffered solution, pH 7.2, containing 0.09% sodium azide and 1% BSA.

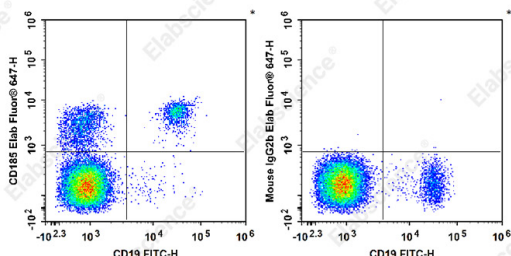
Applications

Recommended usage

FCM

Each lot of this antibody is quality control tested by flow cytometric analysis. **The amount of the reagent is suggested to be used 5 μL of antibody per test (million cells in 100 μL staining volume or per 100 μL of whole blood).** Please check your vial before the experiment. Since applications vary, the appropriate dilutions must be determined for individual use.

Data



Staining of normal human peripheral blood cells with FITC

Anti-Human CD19 Antibody[CB19] and Elab Fluor® 647
Anti-Human CD185 Antibody[MU5UBEE] (left) or Elab Fluor

® 647 Mouse IgG2b, κ Isotype Control (right). Cells in the lymphocytes gate were used for analysis.

Preparation & Storage

Storage	Keep as concentrated solution. This product can be stored at 2-8°C for 12 months. Please protected from prolonged exposure to light and do not freeze.
Shipping	Ice bag

Antigen Information

Alternate Names	BLR1;MDR15
Uniprot ID	P32302
Gene ID	643

For Research Use Only

Background

CD185, also known as CXCR5, is a 42 kD G-protein coupled receptor with seven transmembrane regions. CXCR5 is expressed by mature B cells, follicular helper T cells, Burkitt's lymphoma cells and a subset of neurons, and mediates cell migration to the B cell follicles in the secondary lymphoid organs. The ligand of CXCR5 is CXCL13 (BLC).