

Recombinant Human LAG3/CD223 Protein (mFc Tag)

Catalog Number: PKSH033595

Note: Centrifuge before opening to ensure complete recovery of vial contents.

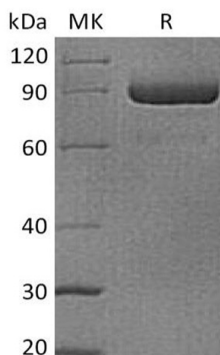
Description

Species	Human
Source	HEK293 Cells-derived Human LAG3/CD223 protein Leu23-Leu450, with an C-terminal mFc
Calculated MW	72.7 kDa
Observed MW	90 kDa
Accession	P18627
Bio-activity	Not validated for activity

Properties

Purity	> 95 % as determined by reducing SDS-PAGE.
Endotoxin	< 1.0 EU per µg of the protein as determined by the LAL method.
Storage	Generally, lyophilized proteins are stable for up to 12 months when stored at -20 to -80°C. Reconstituted protein solution can be stored at 4-8°C for 2-7 days. Aliquots of reconstituted samples are stable at < -20°C for 3 months.
Shipping	This product is provided as lyophilized powder which is shipped with ice packs.
Formulation	Lyophilized from a 0.2 µm filtered solution of PBS, pH 7.4. Normally 5% - 8% trehalose, mannitol and 0.01% Tween 80 are added as protectants before lyophilization.
	Please refer to the specific buffer information in the printed manual.
Reconstitution	Please refer to the printed manual for detailed information.

Data



> 95 % as determined by reducing SDS-PAGE.

Background

Human Lymphocyte activation gene 3 protein (LAG3) is a member of immunoglobulin (Ig) superfamily. LAG3 contains 4 extracellular Ig-like domains. The LAG3 gene contains 8 exons. LAG3 is involved in lymphocyte activation and can bind to HLA class-II antigens. It is selectively expressed in activated T and NK cells. LAG3 has a negative regulatory function in T cells and acts as a new marker of T cell induced B cell activation. As a soluble molecule; LAG3 activates antigen-presenting cells through MHC class II signaling. It can lead to increased antigen-specific T-cell responses in vivo. LAG-3 has higher affinity to MHC class II than CD4.

For Research Use Only

Toll-free: 1-888-852-8623
Web: www.elabscience.com

Tel: 1-832-243-6086
Email: techsupport@elabscience.com

Fax: 1-832-243-6017