

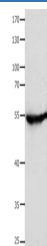
## CAP2 Polyclonal Antibody

catalog number: E-AB-13963

**Note:** Centrifuge before opening to ensure complete recovery of vial contents.

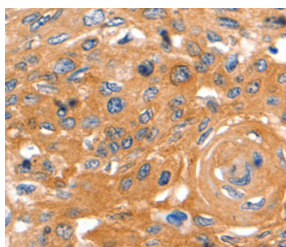
Description	
Reactivity	Human;Mouse;Rat
Immunogen	Recombinant protein of human CAP2
Host	Rabbit
Isotype	IgG
Purification	Affinity purification
Conjugation	Unconjugated
Buffer	Phosphate buffered solution, pH 7.4, containing 0.05% stabilizer and 50% glycerol.
Applications	Recommended Dilution
WB	1:500-1:2000
IHC	1:60-1:200

## Data

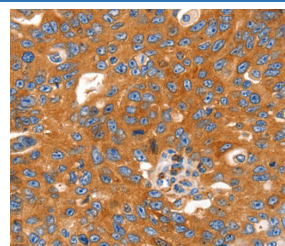


Western Blot analysis of Human fetal muscle tissue using CAP2 Polyclonal Antibody at dilution of 1:700

Calculated-MV:53 kDa



Immunohistochemistry of paraffin-embedded Human cervical cancer using CAP2 Polyclonal Antibody at dilution of 1:60



Immunohistochemistry of paraffin-embedded Human ovarian cancer using CAP2 Polyclonal Antibody at dilution of 1:60

## Preparation & Storage

Storage	Store at -20°C Valid for 12 months. Avoid freeze / thaw cycles.
Shipping	The product is shipped with ice pack,upon receipt,store it immediately at the temperature recommended.

## Background

This gene was identified by its similarity to the gene for human adenylyl cyclase-associated protein. The function of the protein encoded by this gene is unknown. However, the protein appears to be able to interact with adenylyl cyclase-associated protein and actin.

## For Research Use Only